



ASUS Transformer Book

E-Manual



E8378

May 2013

Revised Edition V3

COPYRIGHT INFORMATION

No part of this manual, including the products and software described in it, may be reproduced, transmitted, transcribed, stored in a retrieval system, or translated into any language in any form or by any means, except documentation kept by the purchaser for backup purposes, without the express written permission of ASUSTeK COMPUTER INC. ("ASUS").

ASUS PROVIDES THIS MANUAL "AS IS" WITHOUT WARRANTY OF ANY KIND, EITHER EXPRESS OR IMPLIED, INCLUDING BUT NOT LIMITED TO THE IMPLIED WARRANTIES OR CONDITIONS OF MERCHANTABILITY OR FITNESS FOR A PARTICULAR PURPOSE. IN NO EVENT SHALL ASUS, ITS DIRECTORS, OFFICERS, EMPLOYEES OR AGENTS BE LIABLE FOR ANY INDIRECT, SPECIAL, INCIDENTAL, OR CONSEQUENTIAL DAMAGES (INCLUDING DAMAGES FOR LOSS OF PROFITS, LOSS OF BUSINESS, LOSS OF USE OR DATA, INTERRUPTION OF BUSINESS AND THE LIKE), EVEN IF ASUS HAS BEEN ADVISED OF THE POSSIBILITY OF SUCH DAMAGES ARISING FROM ANY DEFECT OR ERROR IN THIS MANUAL OR PRODUCT.

Products and corporate names appearing in this manual may or may not be registered trademarks or copyrights of their respective companies, and are used only for identification or explanation and to the owners' benefit, without intent to infringe.

SPECIFICATIONS AND INFORMATION CONTAINED IN THIS MANUAL ARE FURNISHED FOR INFORMATIONAL USE ONLY, AND ARE SUBJECT TO CHANGE AT ANY TIME WITHOUT NOTICE, AND SHOULD NOT BE CONSTRUED AS A COMMITMENT BY ASUS. ASUS ASSUMES NO RESPONSIBILITY OR LIABILITY FOR ANY ERRORS OR INACCURACIES THAT MAY APPEAR IN THIS MANUAL, INCLUDING THE PRODUCTS AND SOFTWARE DESCRIBED IN IT.

Copyright © 2013 ASUSTeK COMPUTER INC. All Rights Reserved.

LIMITATION OF LIABILITY

Circumstances may arise where because of a default on ASUS' part or other liability, you are entitled to recover damages from ASUS. In each such instance, regardless of the basis on which you are entitled to claim damages from ASUS, ASUS is liable for no more than damages for bodily injury (including death) and damage to real property and tangible personal property; or any other actual and direct damages resulted from omission or failure of performing legal duties under this Warranty Statement, up to the listed contract price of each product.

ASUS will only be responsible for or indemnify you for loss, damages or claims based in contract, tort or infringement under this Warranty Statement.

This limit also applies to ASUS' suppliers and its reseller. It is the maximum for which ASUS, its suppliers, and your reseller are collectively responsible.

UNDER NO CIRCUMSTANCES IS ASUS LIABLE FOR ANY OF THE FOLLOWING: (1) THIRD-PARTY CLAIMS AGAINST YOU FOR DAMAGES; (2) LOSS OF, OR DAMAGE TO, YOUR RECORDS OR DATA; OR (3) SPECIAL, INCIDENTAL, OR INDIRECT DAMAGES OR FOR ANY ECONOMIC CONSEQUENTIAL DAMAGES (INCLUDING LOST PROFITS OR SAVINGS), EVEN IF ASUS, ITS SUPPLIERS OR YOUR RESELLER IS INFORMED OF THEIR POSSIBILITY.

SERVICE AND SUPPORT

Visit our multi-language web site at <http://support.asus.com>

Table of Contents

About this manual	6
Conventions used in this manual	7
Icons	7
Typography.....	7
Safety precautions.....	8
Using your ASUS Transformer Book.....	8
Caring for your ASUS Transformer Book.....	9
Proper disposal.....	10

Chapter 1: Hardware Setup

Getting to know your ASUS Transformer Book	12
Touch panel display features.....	15
Right Side	18
Left Side	19

Chapter 2: Using your ASUS Transformer Book

Getting started.....	24
Charge your ASUS Transformer Book.....	24
Lift to open the touch panel display.....	25
Press the power button.....	25
Undocking or docking the touch panel display.....	26
Gestures for the touch screen and touchpad	28
Using the touch screen.....	28
Using the touchpad	30
Using the keyboard	36
Function keys	36
Function keys for ASUS Apps	37
Windows® 8 keys.....	38
Using the ASUS Transformer Book key	38

Chapter 3: Working with Windows® 8

Starting for the first time	40
Windows® 8 lock screen.....	40
Windows® UI.....	41
Start screen	41
Windows® App.....	41

Hotspots.....	42
Working with Windows® apps.....	44
Launching apps.....	44
Customizing apps.....	44
Closing apps.....	46
Accessing the Apps screen.....	47
Charms bar.....	49
Snap feature.....	51
Other keyboard shortcuts.....	53
Connecting to wireless networks.....	55
Wi-Fi.....	55
Bluetooth.....	57
Airplane mode.....	59
Connecting to wired networks.....	60
Configuring a dynamic IP/PPPoE network connection.....	60
Configuring a static IP network connection.....	64
Turning your ASUS Transformer Book off.....	65
Putting your ASUS Transformer Book on Sleep mode.....	65

Chapter 4: ASUS apps

Featured ASUS Apps.....	68
LifeFrame.....	68
Power4Gear Hybrid.....	70
Instant On.....	71
ASUS Transformer Book App Launcher.....	72

Chapter 5: Power-on Self Test (POST)

The Power-on Self Test (POST).....	82
Using POST to access BIOS and Troubleshoot.....	82
BIOS.....	82
Accessing BIOS.....	82
BIOS Settings.....	83
Troubleshoot.....	92
Refresh your PC.....	92
Reset your PC.....	93
Advanced options.....	94

Appendices

DVD-ROM Drive Information (on selected models).....	98
Blu-ray ROM Drive Information (on selected models)	100
Internal Modem Compliancy	101
Overview.....	101
Network Compatibility Declaration	101
Network Compatibility Declaration	102
Non-Voice Equipment	102
Federal Communications Commission Statement.....	104
RF Exposure Information (SAR).....	106
FCC Radio Frequency (RF) Exposure Caution Statement	107
Declaration of Conformity (R&TTE directive 1999/5/EC).....	107
CE Marking.....	108
IC Radiation Exposure Statement for Canada	108
Déclaration d'Industrie Canada relative à l'exposition aux ondes radio	109
Wireless Operation Channel for Different Domains.....	110
France Restricted Wireless Frequency Bands	110
UL Safety Notices.....	112
Power Safety Requirement.....	113
TV Tuner Notices	113
REACH	113
Nordic Lithium Cautions (for lithium-ion batteries).....	113
Optical Drive Safety Information	115
CTR 21 Approval (for ASUS Transformer Book with built-in Modem).....	116
ENERGY STAR complied product	117
European Union Eco-label.....	118
Prevention of Hearing Loss	118
Coating Notice.....	118
Global Environmental Regulation Compliance and Declaration	119
ASUS Recycling/Takeback Services.....	119
Regional notice for Singapore	119
Regional notice for United States of America	119

About this manual

This manual provides information about the hardware and software features of your ASUS Transformer Book, organized through the following chapters:

Chapter 1: Hardware Setup

This chapter details the hardware components of your ASUS Transformer Book.

Chapter 2: Using your ASUS Transformer Book

This chapter shows you how to use the different parts of your ASUS Transformer Book.

Chapter 3: Working with Windows® 8

This chapter provides an overview of using Windows® 8 in your ASUS Transformer Book.

Chapter 4: ASUS Apps

This chapter features the ASUS apps included with your ASUS Transformer Book.

Chapter 5: Power-on Self-test (POST)

This chapter shows you how to use POST to change the settings of your ASUS Transformer Book.

Appendices

This section includes notices and safety statements for your ASUS Transformer Book.

Conventions used in this manual

To highlight key information in this manual, some text are presented as follows:

IMPORTANT! This message contains vital information that must be followed to complete a task.

NOTE: This message contains additional information and tips that can help complete tasks.

WARNING! This message contains important information that must be followed to keep you safe while performing tasks and prevent damage to your ASUS Transformer Book's data and components.

Icons

The icons below indicate the devices you can use for completing a series of tasks or procedures on your ASUS Transformer Book.



= Use the touch screen touch panel display.



= Use the touchpad.



= Use the keyboard.

Typography

Bold = This indicates a menu or an item that must be selected.

Italic = This indicates sections that you can refer to in this manual.

Safety precautions

Using your ASUS Transformer Book



This ASUS Transformer Book should only be used in environments with ambient temperatures between 5°C (41°F) and 35°C (95°F).



Refer to the rating label on the bottom of your ASUS Transformer Book and ensure that your power adapter complies with this rating.



Do not leave your ASUS Transformer Book on your lap or near any part of your body to prevent discomfort or injury from heat exposure.



Do not use damaged power cords, accessories, and other peripherals with your ASUS Transformer Book.



While powered on, ensure that you do not carry or cover your ASUS Transformer Book with any materials that can reduce air circulation.



Do not place your ASUS Transformer Book on uneven or unstable work surfaces.



You can send your ASUS Transformer Book through x-ray machines (used on items placed on conveyor belts), but do not expose them to magnetic detectors and wands.



Contact your airline provider to learn about related in-flight services that can be used and restrictions that must be followed when using your ASUS Transformer Book in-flight.

Caring for your ASUS Transformer Book



Disconnect the AC power and remove the battery pack (if applicable) before cleaning your ASUS Transformer Book. Use a clean cellulose sponge or chamois cloth dampened with a solution of nonabrasive detergent and a few drops of warm water. Remove any extra moisture from your ASUS Transformer Book using a dry cloth.



Do not use strong solvents such as thinners, benzene, or other chemicals on or near your ASUS Transformer Book.



Do not place objects on top of your ASUS Transformer Book.



Do not expose your ASUS Transformer Book to strong magnetic or electrical fields.



Do not use or expose your ASUS Transformer Book near liquids, rain, or moisture.



Do not expose your ASUS Transformer Book to dusty environments.



Do not use your ASUS Transformer Book near gas leaks.

Proper disposal



Do not throw your ASUS Transformer Book in municipal waste. This product has been designed to enable proper reuse of parts and recycling. The symbol of the crossed out wheeled bin indicates that the product (electrical, electronic equipment and mercury-containing button cell battery) should not be placed in municipal waste. Check local regulations for disposal of electronic products.

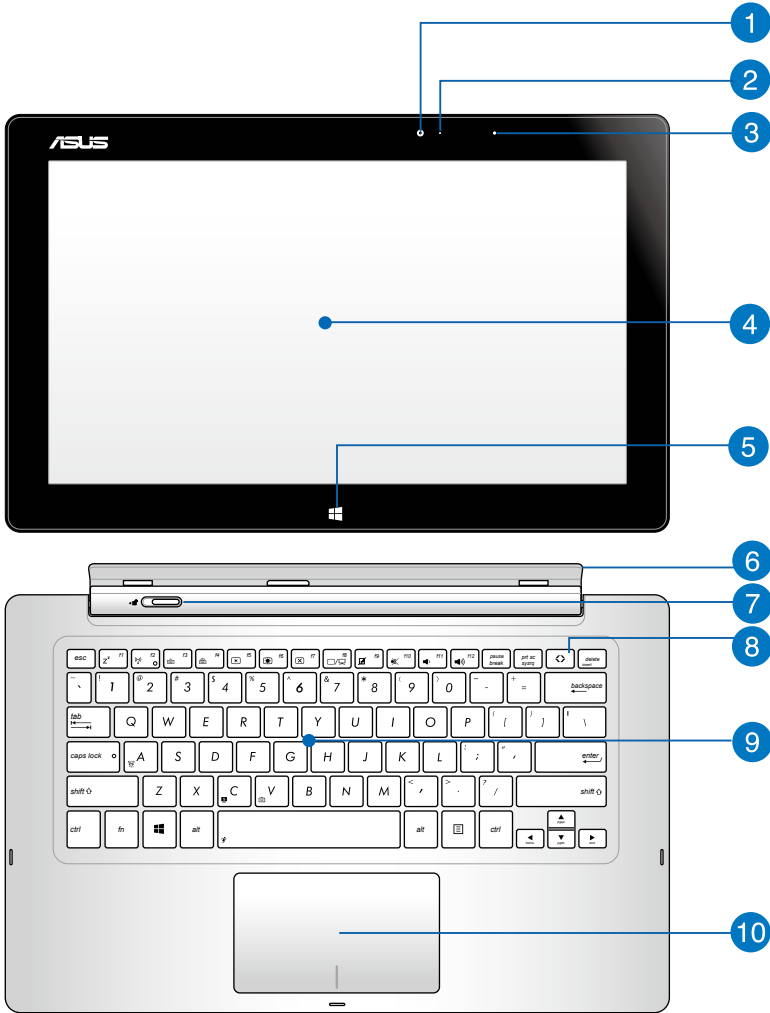


Do not throw the battery in municipal waste. The symbol of the crossed out wheeled bin indicates that the battery should not be placed in municipal waste.

Chapter 1: ***Hardware Setup***

Getting to know your ASUS Transformer Book

NOTE: The keyboard's layout may vary per region or country. The Notebook view may also vary in appearance depending on the ASUS Transformer Book model.



1 Touch panel display front camera

The built-in camera allows you to take pictures or record videos using your ASUS Transformer Book.

NOTE: To toggle between the front and rear cameras (on selected models) of the touch panel display, press the **ASUS Transformer Book** key then select **Camera Rotation**.

2 Camera indicator

The camera indicator lights up when the built-in camera is in use.

3 Ambient light sensor

This ambient light sensor detects the amount of ambient light in your environment. It allows the system to automatically adjust the brightness of the display depending on the ambient light condition.

4 Touch panel display

This detachable touch panel display provides excellent viewing features for photos, videos, and other multimedia files on your ASUS Transformer Book. The touch-enabled panel also allows you to operate your ASUS Transformer Book using touch screen gestures.

NOTE: For more details, refer to the *Gestures for the touch screen and touchpad* section in this manual.

5 Windows® 8 touch button

Touch this button to go back to the Start screen. If you are already in the Start screen, touch this button to go back to the last app you opened.

6 Touch panel display holder

This holder allows you to connect the touch panel display to the ASUS Transformer Book's mobile dock.

WARNING! Dock the touch panel display before adjusting the angle of the touch display panel holder. For more details, refer to the *Undocking or docking the touch panel display* section in this manual.

7 Dock latch

Move the latch to the left and hold it to detach the touch panel display from the dock.

8 ASUS Transformer Book key

Press this key to launch the ASUS Transformer Book App Launcher.

NOTE: For more information, refer to the *ASUS Transformer Book App Launcher* section in this manual.

9 Keyboard

The keyboard provides full-sized QWERTY keys with a comfortable travel depth for typing. It also enables you to use the function keys, allows quick access to Windows®, and controls other multimedia functions.

NOTE:

- The keyboard layout differs by model or territory.
 - Some selected models come with a backlit keyboard.
-

10 Touchpad

The touchpad allows the use of multi-gestures to navigate onscreen, providing an intuitive user experience. It also simulates the functions of a regular mouse.

NOTE: For more details, refer to the *Gestures for the touchpad* section in this manual.

Touch panel display features

The ASUS Transformer Book comes with a detachable touch panel display that works like a Tablet PC to suit your mobile needs. The touch panel display is also equipped with its own features for work and play.

NOTE: For more details on detaching or reattaching the touch panel display, refer to the *Undocking or docking the touch panel display* section in this manual.

Top view



1 Power button

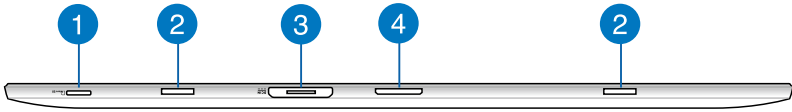
Press the power button to turn your ASUS Transformer Book on or off. You can also use the power button to put your ASUS Transformer Book to sleep or hibernate mode and wake it up from sleep or hibernate mode.

In the event that your ASUS Transformer Book becomes unresponsive, press and hold the power button for about four (4) seconds until your ASUS Transformer Book shuts down.

2 Microphone

The built-in microphone can be used for video conferencing, voice narrations, or simple audio recording.

Bottom view



1 MicroSD card slot

The touch panel display comes with an additional built-in memory card reader slot that supports microSD and microSDHC card formats.

2 Hinge holes

Align and insert the latch hooks into these holes to securely attach the touch panel display to the dock.

3 Magnetic power connector

When the touch panel display is detached from the dock, connect the bundled power adapter into this connector to charge the battery pack and supply power to the touch panel display.

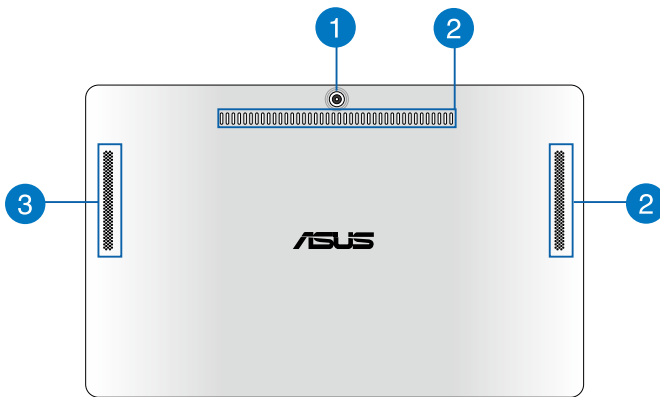
WARNING! The adapter may become warm to hot while in use. Ensure not to cover the adapter and keep it away from your body while it is connected to a power source.

IMPORTANT! Use only the bundled power adapter to charge the battery pack and supply power to your ASUS Transformer Book.

4 Dock connector

The dock connector connects the touch panel display to the dock. When connected, you can enjoy a standard QWERTY keyboard and a host of featured ports including two USB 3.0 ports, an SD/SDHC memory card reader, an RJ-45 LAN port, and a mini DisplayPort for a digital audio/video interface.

Rear view



1 Touch panel display rear camera (on selected models)

The built-in camera allows you to take pictures or record videos using your ASUS Transformer Book.

NOTE: To toggle between the front and rear cameras (on selected models) of the touch panel display, press the **ASUS Transformer Book** key then select **Camera Rotation**.

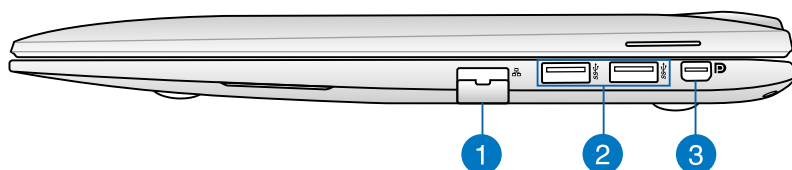
2 Air vents

The air vents allow cool air to enter and warm air to exit the ASUS Transformer Book's touch panel display.

3 Touch panel display speakers

These speakers allow you to hear audio straight from the ASUS Transformer Book's touch panel display.

Right Side



1 LAN port

Insert the network cable into this port to connect to a local area network (LAN).

2 USB 3.0 ports

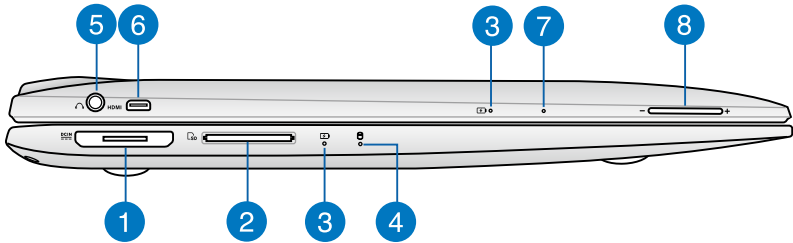
These Universal Serial Bus 3.0 (USB 3.0) ports provide a transfer rate of up to 5 Gbit/s and are backward compatible to USB 2.0.

3 Mini DisplayPort

Use this port to connect your ASUS Transformer Book to a DisplayPort or VGA external display.

NOTE: This mini DisplayPort does not support DP++ (Dual-mode DisplayPort) functions.

Left Side



1 Magnetic power connector

This power connector allows you to magnetically attach the power connector of your AC adapter to your ASUS Transformer Book. Connect the bundled power adapter into this connector to charge the battery pack and supply power to your ASUS Transformer Book.

WARNING! The adapter may become warm to hot while in use. Ensure not to cover the adapter and keep it away from your body while it is connected to a power source.

IMPORTANT! Use only the bundled power adapter to charge the battery pack and supply power to your ASUS Transformer Book.

2 Memory card reader

This ASUS Transformer Book has a single built-in memory card reader slot that supports SD and SDHC card formats.

3 Two-color battery charge indicator

The two-color LED provides a visual indication of the battery's charge status. Refer to the following table for details:

Color	Status
Solid Green	The ASUS Transformer Book's mobile dock or touch panel display is plugged to a power source, charging its battery, and the battery power is between 95% and 100%.
Solid Orange	<ul style="list-style-type: none"> <li data-bbox="466 375 924 512">• The ASUS Transformer Book's mobile dock is plugged to a power source, charging its battery, and the battery power is less than 95%. <li data-bbox="466 531 924 699">• The touch panel is connected to the mobile dock, charging its battery, and the touch panel display's battery power is less than 30%. <hr/> <p data-bbox="527 746 884 866">NOTE: This charging process is automatically enabled even while your system is on sleep mode or turned off.</p> <hr/>
Blinking Orange	The ASUS Transformer Book's touch panel display or mobile dock is running on battery mode and the battery power is less than 10%.
Lights off	The ASUS Transformer Book's touch panel display or mobile dock is running on battery mode and the battery power is between 10% to 100%.

4 Drive activity indicator

This indicator lights up when your ASUS Transformer Book is accessing the internal storage drives.

5 Headphone output/microphone input combo jack port

This port allows you to connect your ASUS Transformer Book to amplified speakers or headphones. You can also use this port to connect your ASUS Transformer Book to an external microphone.

6 Micro HDMI port

This port is for a micro High-Definition Multimedia Interface (HDMI) connector and is HDCP compliant for HD DVD, Blu-ray and other protected content playback.

7 Manual reset hole

If the system becomes unresponsive, insert a straightened paper clip into the hole to force-restart your ASUS Transformer Book.

WARNING! Forcing the system to restart may result to data loss. We strongly recommend that you back up your data regularly.

8 Volume button

Press this button to increase or decrease the volume.

Chapter 2: ***Using your ASUS Transformer*** ***Book***

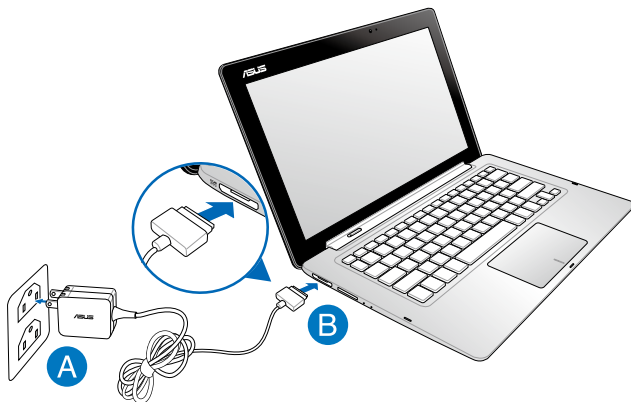
Getting started

Charge your ASUS Transformer Book.

- A. Plug the AC power adapter into a 100V~240V power source.
- B. Connect the DC power connector into your ASUS Transformer Book's power (DC) input.



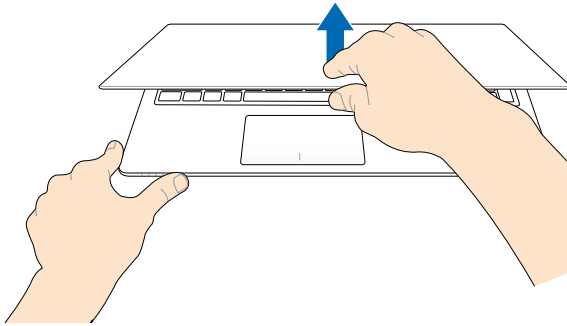
Charge the ASUS Transformer Book for **3 hours** before using it in battery mode for the first time.



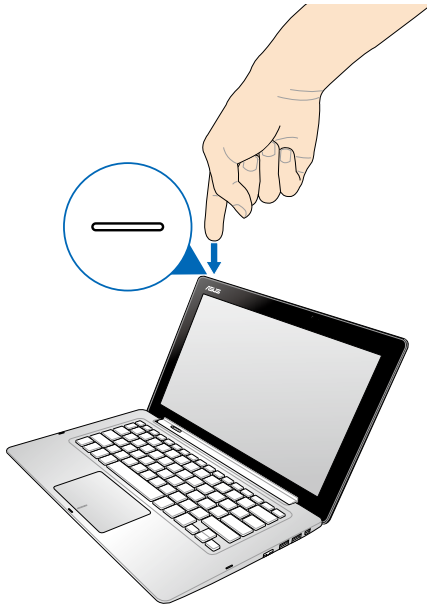
IMPORTANT!

- Ensure that your ASUS Transformer Book is plugged -in to a grounded power outlet before turning it on for the first time.
 - When using your ASUS Transformer Book on power adapter mode, the socket outlet must be near to the unit and easily accessible.
 - Locate the input/output rating label on your ASUS Transformer Book and ensure that it matches the input/output rating information on your power adapter. Some ASUS Transformer Book models may have multiple rating output currents based on the available SKU. Refer below for the ASUS Transformer Book power adapter information:
 - Input voltage: 100-240Vac
 - Input frequency: 50-60Hz
 - Rating output current: 3.42A (65W)
 - Rating output voltage: 19V
-

Lift to open the touch panel display.

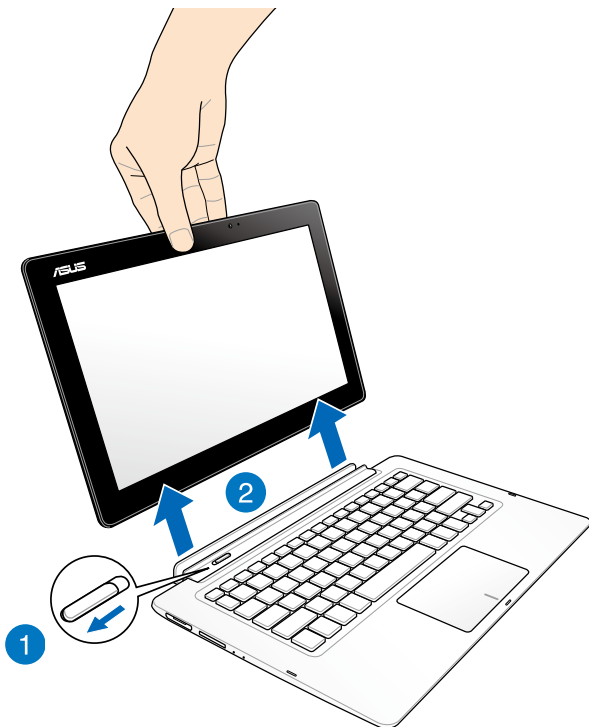


Press the power button.

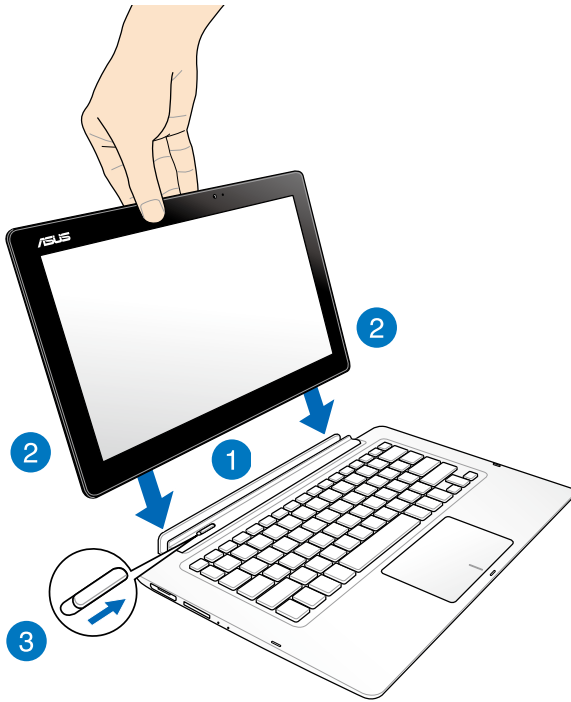


Undocking or docking the touch panel display.

Undocking



Docking



NOTE: When docking the touch panel display while the system is turned on, Windows® 8 automatically detects the available storage drives in the touch panel display and launches their respective storage drive windows via Autoplay. To disable this feature:

1. Go to the Windows® 8 **Control Panel**.
 2. Select **Small icons** under **View by** then select **Autoplay** from the list of icons.
 2. Under **Removable drives**, select **Take no action** from the Removable drive option list.
 3. Tap **Save** to save the new settings then exit.
-

Gestures for the touch screen and touchpad

Gestures allow you to launch programs and access the settings of your ASUS Transformer Book. Refer to the following illustrations when using hand gestures on your touch screen and touchpad.

Using the touch screen

Left edge swipe



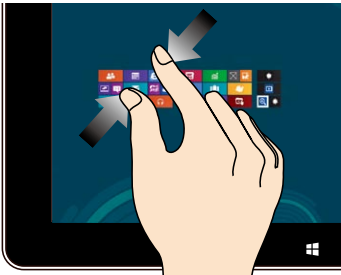
Swipe from the left edge of the screen to shuffle your running apps.

Right edge swipe



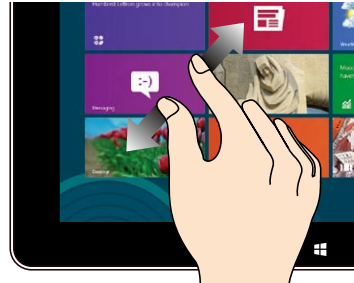
Swipe from the right edge of the screen to launch the **Charms bar**.

Zoom out



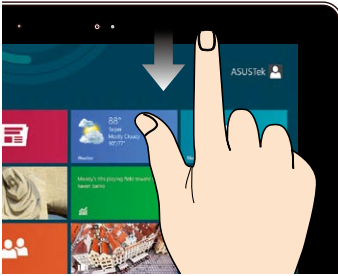
Bring together your two fingers on the touch panel.

Zoom in



Spread apart your two fingers on the touch panel.

Top edge swipe



- In the Start screen, swipe from the top edge of the screen to view the **All Apps** bar.
- In a running app, swipe from the top edge of the screen to view its menu.

Finger slide



Slide your finger to scroll up and down and slide your finger to pan the screen left or right.

Tap and hold



- To move an app, tap and hold the app tile and drag it to a new location.
- To close an app, tap and hold the top side of the running app and drag it down to the bottom of the screen to close it.

Tap/Double tap



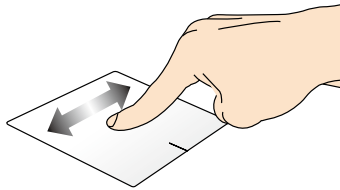
- Tap an app to launch it.
- On Desktop mode, double-tap an application to launch it.

Using the touchpad

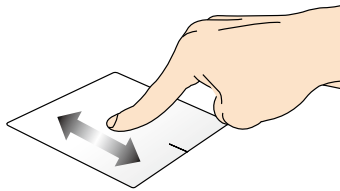
Moving the pointer

You can tap or click anywhere on the touchpad to activate its pointer, then slide your finger on the touchpad to move the pointer onscreen.

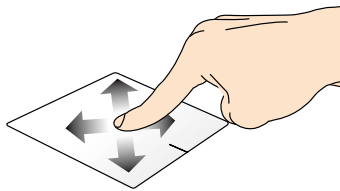
Slide horizontally



Slide vertically

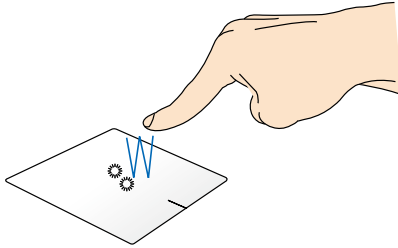


Slide diagonally



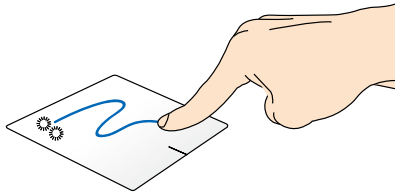
One-finger gestures

Tap/Double tap



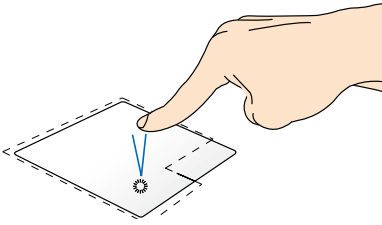
- In the Start screen, tap an app to launch it.
- In Desktop mode, double-tap an application to launch it.

Drag and drop



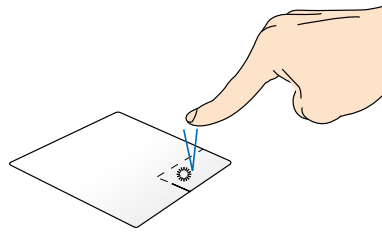
Double-tap an item, then slide the same finger without lifting it off the touchpad. To drop the item to its new location, lift your finger from the touchpad.

Left-click



- In the Start screen, click an app to launch it.
- In Desktop mode, double-click an application to launch it.

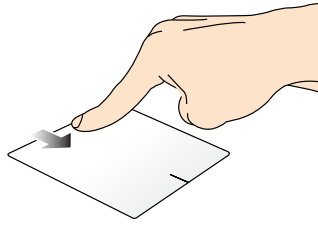
Right-click



- In the Start screen, click an app to select it and launch the settings bar. You can also press this button to launch the **All Apps** bar.
- In Desktop mode, use this button to open the right-click menu.

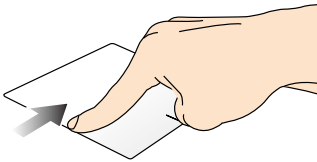
NOTE: The areas inside the dotted line represent the locations of the left mouse button and the right mouse button on the touchpad.

Top edge swipe



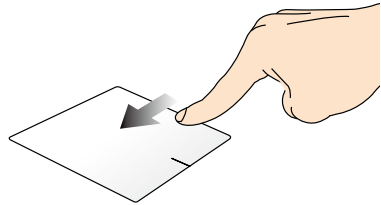
- In the Start screen, swipe from the top edge to launch the **All Apps** bar.
- In a running app, swipe from the top edge to view its menu.

Left edge swipe



Swipe from the left edge to shuffle your running apps.

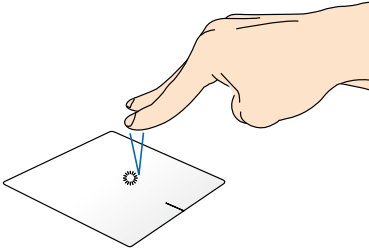
Right edge swipe



Swipe the right edge to launch the **Charms bar**.

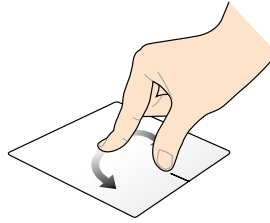
Two-finger gestures

Tap



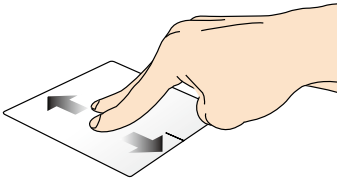
Tap two fingers on the touchpad to simulate the right-click function.

Rotate



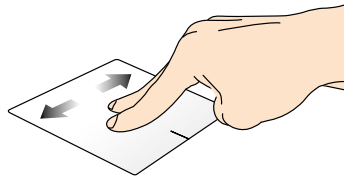
To rotate an image, place two fingers on the touchpad then turn one finger clockwise or counterclockwise while the other stays still.

Two-finger scroll (up/down)



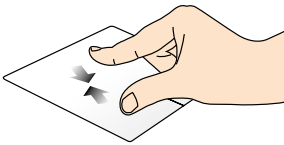
Slide two fingers to scroll up or down.

Two-finger scroll (left/right)



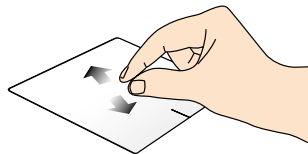
Slide two fingers to scroll left or right.

Zoom out



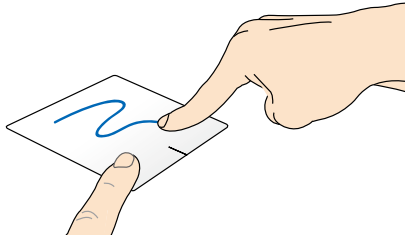
Bring together your two fingers on the touchpad.

Zoom in



Spread apart your two fingers on the touchpad.

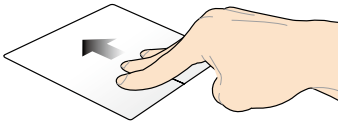
Drag and drop



Select an item then press and hold the left button. Using your other finger, slide down the touchpad to drag and drop the item to a new location.

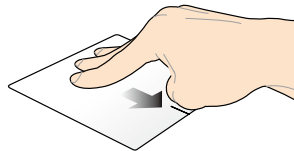
Three-finger gestures

Swipe up



Swipe three fingers upward to show all running applications.

Swipe down

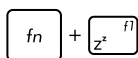


Swipe three fingers downward to show the Desktop mode.

Using the keyboard

Function keys

The function keys on your ASUS Transformer Book's keyboard can trigger the following commands:



Puts the ASUS Transformer Book into **Sleep mode**



Turns **Airplane mode** on or off

NOTE: When enabled, the **Airplane mode** disables all wireless connectivity.



(on selected models) Decreases keyboard brightness for ASUS Transformer Book models with a backlit keyboard



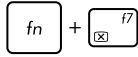
(on selected models) Increases keyboard brightness for ASUS Transformer Book models with a backlit keyboard



Decreases display brightness



Increases display brightness



Turns the touch panel display off



Activates the second screen

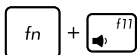
NOTE: Ensure that the second display is connected to your ASUS Transformer Book.



Enables or disables the touchpad



Turns the speaker on or off



Turns the speaker volume down



Turns the speaker volume up



(on selected models) Toggles the ambient light sensor on or off

Function keys for ASUS Apps

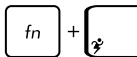
Your ASUS Transformer Book also comes with a special set of function keys that can be used to launch ASUS apps.



Toggles the **ASUS Splendid Video Enhancement Technology** app to switch between these display color enhancement modes: Gamma Correction, Vivid Mode, Theater Mode, Soft Mode, My Profile, and Normal.



Launches the **ASUS LifeFrame** app



Launches the **ASUS Power4Gear Hybrid** app

Windows® 8 keys

There are two special Windows® keys on your ASUS Transformer Book's keyboard used as below:



Press this key to go back to the Start screen. If you are already in the Start screen, press this key to go back to the last app you opened.



Press this key to simulate the right-click functions.

Using the ASUS Transformer Book key



Pressing this key launches the ASUS Transformer Book App Launcher inside Windows® 8.

This home page provides quick-access to some of the exclusive ASUS apps included with your ASUS Transformer Book.

Chapter 3: ***Working with Windows® 8***

Starting for the first time

When you start your computer for the first time, a series of screens appear to guide you in configuring the basic settings of your Windows® 8 operating system.

To start your ASUS Transformer Book for the first time:

1. Press the power button on your ASUS Transformer Book. Wait for a few minutes until the setup screen appears.
2. From the setup screen, pick a language to use on your ASUS Transformer Book.
3. Carefully read the License Terms. Tick **I accept the terms for using Windows** then click **Accept**.
4. Follow the onscreen instructions to configure the following basic items:
 - Keep your PC secure
 - Personalize
 - Wireless
 - Settings
 - Sign in to your PC
5. After configuring the basic items, the Windows®8 tutorial appears. Watch this to learn more about Windows®8 functionalities.

Windows® 8 lock screen

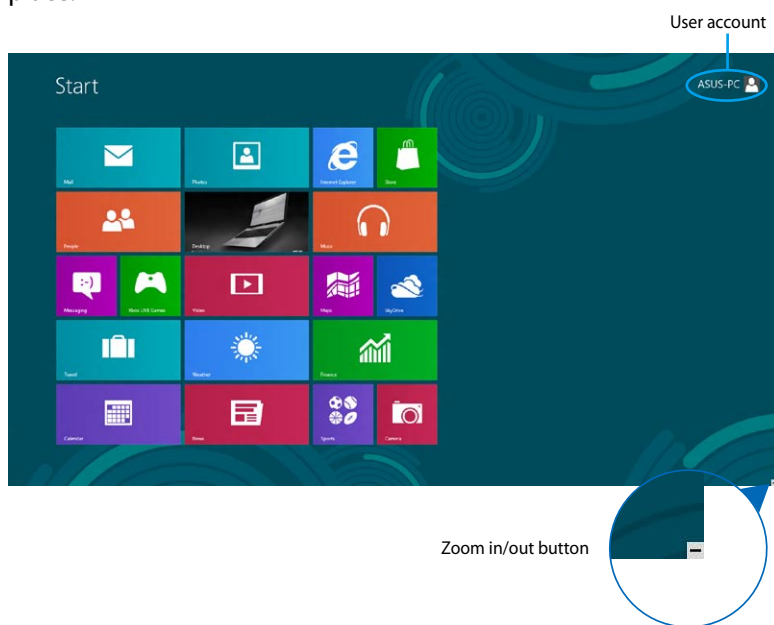
The Windows®8 lock screen may appear when your ASUS Transformer Book enters the Windows®8 operating system. To proceed, tap on the lock screen or press any key on your ASUS Transformer Book's keyboard.

Windows® UI

Windows® 8 comes with a tile-based user interface (UI) which allows you to organize and easily access Windows® apps from the Start screen. It also includes the following features that you can use while working on your ASUS Transformer Book.

Start screen

The Start screen appears after successfully signing in to your user account. It helps organize all the applications you need in just one place.



Windows® App

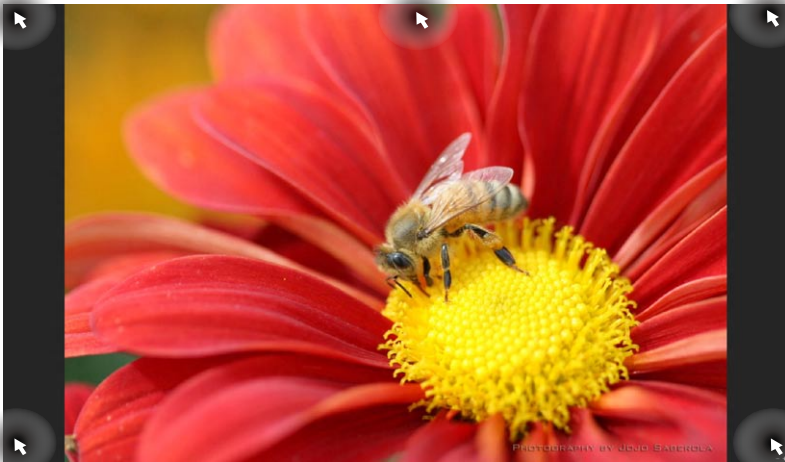
These are apps pinned on the Start screen and displayed on tiled-format for easy access.

NOTE: Some apps require signing in to your Microsoft account before they are fully launched.

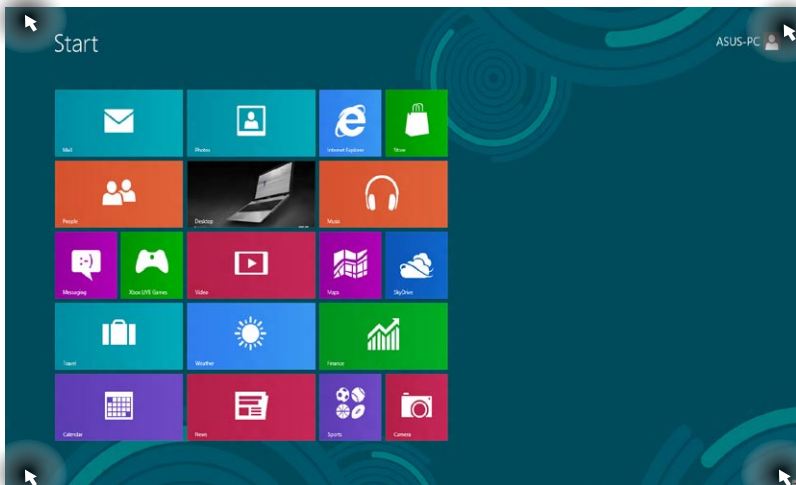
Hotspots


Onscreen hotspots allow you to launch programs and access the settings of your ASUS Transformer Book. The functions in these hotspots can be activated using the touchpad.

Hotspots on a running app



Hotspots on the Start screen



Hotspot	Action
upper left corner	<p>Hover your mouse pointer on the upper left corner then tap on the recent app's thumbnail to revert back to that running app.</p> <hr/> <p>If you launched more than one app, slide down to show all running apps.</p>
lower left corner	<p>From a running app screen:</p> <p>Hover your mouse pointer on the lower left corner then tap on the Start screen's thumbnail to go back to the Start screen.</p> <hr/> <p>NOTE: You can also press the Windows key  on your keyboard to go back to the Start screen.</p> <hr/> <p>From the Start screen:</p> <p>Hover your mouse pointer on the lower left corner then tap on the running app's thumbnail to go back to that app.</p>
top side	<p>Hover your mouse pointer on the top side until it changes to a hand icon. Drag then drop the app to a new location.</p> <hr/> <p>NOTE: This hotspot function only works on a running app or when you want to use the Snap feature. For more details, refer to the Snap feature under <i>Working with Windows® apps</i>.</p>
upper or lower right corner	<p>Hover your mouse pointer on the upper or lower right corner to launch the Charms bar.</p>

Working with Windows® apps

Use your ASUS Transformer Book's touch screen touch panel display, touchpad, or keyboard to launch, customize, and close apps.

Launching apps

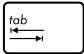
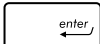


Tap an app to launch it.



Position your mouse pointer over the app then left-click or tap once to launch it.



Press  twice then use the arrow keys to browse through the apps. Press  to launch an app.

Customizing apps

You can move, resize, or unpin apps from the Start screen using the following steps:

Moving apps



Tap and hold the app tile then drag it to a new location.





Double-tap on the app then drag and drop the app to a new location.

Resizing apps



1. Swipe down the app tile to select and launch the settings bar.

2. Tap  to reduce or  to enlarge the app tile.



Right-click on the app to activate its settings bar then tap



Unpinning apps



1. Swipe down the app tile to select and launch the settings bar.

2. Tap  to unpin an app.



Right-click on the app to activate the settings bar then tap



Closing apps



Tap and hold the top side of the running app then drag it down to the bottom of the screen to close it.



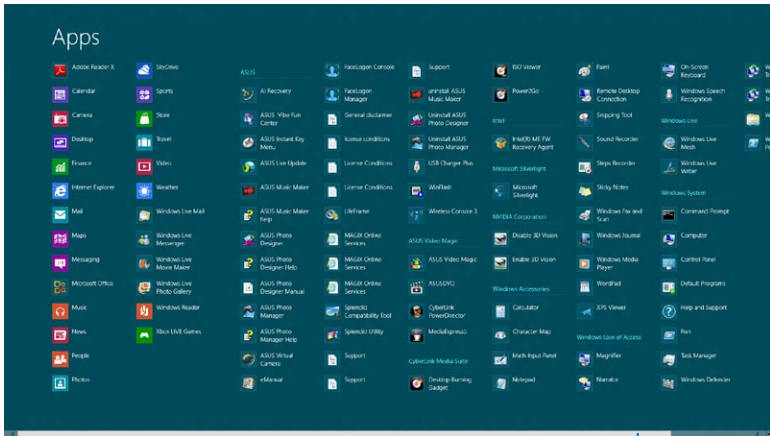
1. Move your mouse pointer on the top side of the launched app then wait for the pointer to change to a hand icon.
2. Drag then drop the app to the bottom of the screen to close it.



From the running app's screen, press `alt` + `F4`.

Accessing the Apps screen

Aside from the apps already pinned on your Start screen, you can also open other applications through the Apps screen.




Horizontal scroll bar

Launching the Apps screen

Launch the Apps screen using your ASUS Transformer Book's touch screen touch panel display, touchpad, or keyboard.




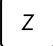
1. Swipe from the top or bottom edge of the screen to launch the **All Apps** bar.

2. Tap  to show all installed apps in your Notebook PC.



Swipe from the top edge to launch the **All Apps** bar.



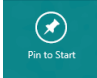
From the Start screen, press  +  to select the **All**

Apps icon  then press .


Pinning more apps on the Start screen

You can pin more apps on the Start screen using your touch screen touch panel display or touchpad.



1. In the Apps screen, swipe down the app to select and launch the settings bar.
2. Tap  to pin the selected app on the Start screen.



1. Position the mouse pointer over the app you want to pin on the Start screen.
2. Right-click on the app to activate its settings.
3. Tap on the  icon.

Charms bar

The Charms bar is a toolbar that can be triggered on the right side of your screen. It consists of several tools that allow you to share applications and provide quick access for customizing the settings of your ASUS Transformer Book.



Charms bar

Launching the Charms bar

NOTE: When called out, the Charms bar initially appears as a set of white icons. The image above shows how the Charms bar looks like once activated.

Use your ASUS Transformer Book's touch screen touch panel display, touchpad, or keyboard to launch the Charms bar.



Swipe from the right edge of the screen to launch the **Charms bar**.



Move your mouse pointer on the upper or lower right corner of the screen.



Press  + .

Inside the Charms bar



Search

This tool allows you to look for files, applications, or programs in your ASUS Transformer Book.



Share

This tool allows you to share applications via social networking sites or email.



Start

This tool reverts the display back to the Start screen. From the Start screen, you can also use this to return to a recently opened app.



Devices

This tool allows you to access and share files with the devices attached to your ASUS Transformer Book such as an external display or printer.



Settings

This tool allows you to access the PC settings of your ASUS Transformer Book.

Snap feature

The Snap feature displays two apps side-by-side, allowing you to work or switch between apps.

IMPORTANT! Ensure that your ASUS Transformer Book's screen resolution is set to 1366 x 768 pixels or higher before using the Snap feature.



Snap bar

Using Snap

Use your ASUS Transformer Book's touch screen touch panel display, touchpad, or keyboard to activate and use Snap.







1. Launch the app you wish to snap.
2. Tap and hold the app's topmost part then drag it to the left or right side of the screen until the snap bar appears.
3. Launch another app.



1. Launch the app you wish to snap.
2. Hover the mouse point on the top side of your screen.
3. Once the pointer changes to a hand icon, drag then drop the app to the left or right side of the touch panel display.
4. Launch another app.



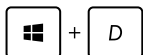
1. Launch the app you wish to snap.
2. Press  + .
3. Launch another app.
4. To switch between apps, press  + .

Other keyboard shortcuts

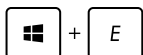
Using the keyboard, you can also use the following shortcuts to help you launch applications and navigate Windows® 8.



Switches between the Start screen and the last running app



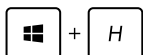
Launches the desktop



Launches the **Computer** window on Desktop mode



Opens the **File** charm



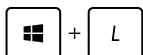
Opens the **Share** charm



Opens the **Settings** charm



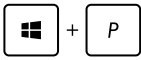
Opens the **Devices** charm



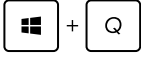
Activates the Lock screen



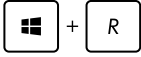
Minimizes the **Internet Explorer** window



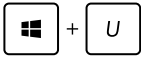
Opens the **Second screen** pane



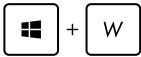
Opens the **Apps** search pane



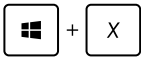
Opens the **Run** window



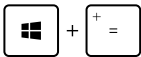
Opens **Ease of Access Center**



Opens the **Settings** charm



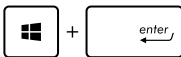
Opens a menu box of Windows® tools



Launches the magnifier icon and zooms in your screen



Zooms out your screen



Opens the **Narrator Settings**



Enables the **print screen** function

Connecting to wireless networks

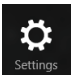

Wi-Fi

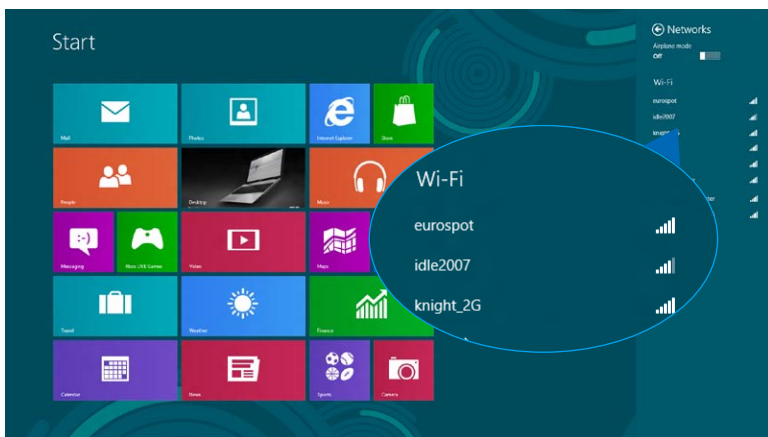
Access emails, surf the Internet, and share applications via social networking sites using your ASUS Transformer Book's Wi-Fi connection.

IMPORTANT! Ensure the **Airplane mode** is turned off to enable the Wi-Fi function of your ASUS Transformer Book. For more details, refer to the *Airplane mode* section in this manual.

Enabling Wi-Fi

Activate Wi-Fi in your ASUS Transformer Book using the following steps on your touch screen touch panel display or touchpad.

1. Launch the **Charms bar**.
2. Tap  and tap .
3. Select an access point from the list of available Wi-Fi connections.



4. Tap **Connect** to start the network connection.

NOTE: You may be prompted to enter a security key to activate the Wi-Fi connection.

5. If you want to enable sharing between your ASUS Transformer Book and other wireless-enabled systems, tap **Yes, turn on sharing and connect to devices**. Tap **No, don't turn on sharing or connect to devices** if you do not want to enable the sharing function.

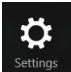
Bluetooth

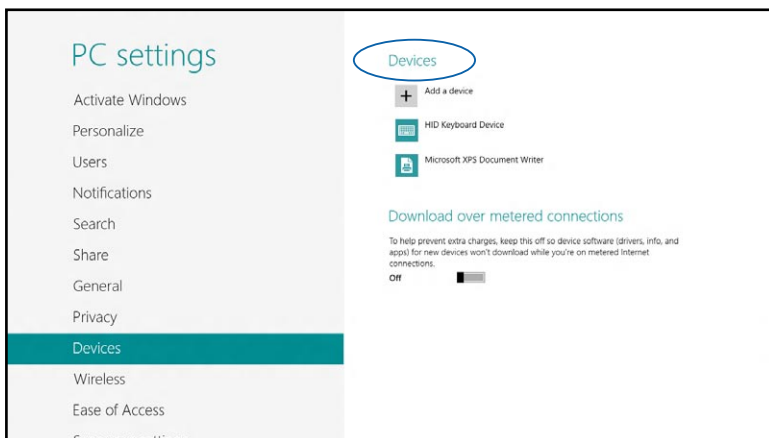
Use Bluetooth to facilitate wireless data transfers with other Bluetooth-enabled devices.

IMPORTANT! Ensure the **Airplane mode** is turned off to enable the Bluetooth function of your ASUS Transformer Book. For more details, refer to the *Airplane mode* section in this manual.

Pairing with other Bluetooth-enabled devices

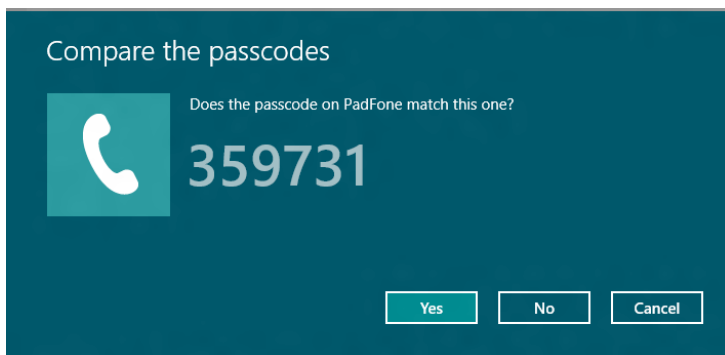
You need to pair your ASUS Transformer Book with other Bluetooth-enabled devices to enable data transfers. To do this, use your or touch screen touch panel display or touchpad as follows:

1. Launch the **Charms bar**.
2. Tap  then tap **Change PC Settings**.
3. Under **PC Settings**, select **Devices** then tap **Add a Device** to search for Bluetooth-enabled devices.



4. Select a device from the list. Compare the passcode on your ASUS Transformer Book with the passcode sent to your chosen device. If they are the same, tap **Yes** to successfully pair your ASUS Transformer Book with the device.

NOTE: For some bluetooth-enabled devices, you may be prompted to key in the passcode of your ASUS Transformer Book.



Airplane mode

The **Airplane mode** disables wireless communication, allowing you to use your ASUS Transformer Book safely while in-flight.



Turning Airplane mode on



or

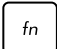
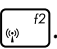


1. Launch the **Charms bar**.

2. Tap  and tap .

3. Move the slider to the right to turn the Airplane mode on.



Press  + .

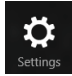

Turning Airplane mode off



or

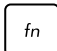



1. Launch the **Charms bar**.

2. Tap  and tap .

3. Move the slider to the left to turn the Airplane mode off.



Press  + .

NOTE: Contact your airline provider to learn about related inflight services that can be used and restrictions that must be followed when using your ASUS Transformer Book in-flight.

Connecting to wired networks

You can also connect to wired networks, such as local area networks and broadband Internet connection, using your ASUS Transformer Book's LAN port.

NOTE: Contact your Internet Service Provider (ISP) for details or your network administrator for assistance in setting up your Internet connection.

To configure your settings, refer to the following procedures.


IMPORTANT! Ensure that a network cable is connected between your ASUS Transformer Book's LAN port and a local area network before performing the following actions.

Configuring a dynamic IP/PPPoE network connection

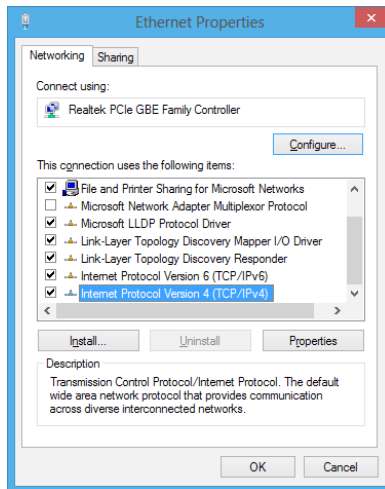


or

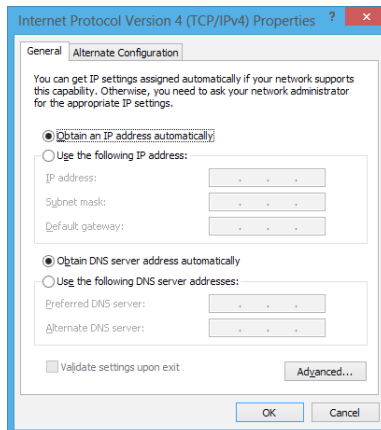


1. Launch **Desktop**.
2. From the Windows® taskbar, right-click the network icon  then tap **Open Network and Sharing Center**.
3. In the Network and Sharing Center window, tap **Change adapter settings**.
4. Right-click on your LAN then select **Properties**.

5. Tap **Internet Protocol Version 4(TCP/IPv4)** then tap **Properties**.

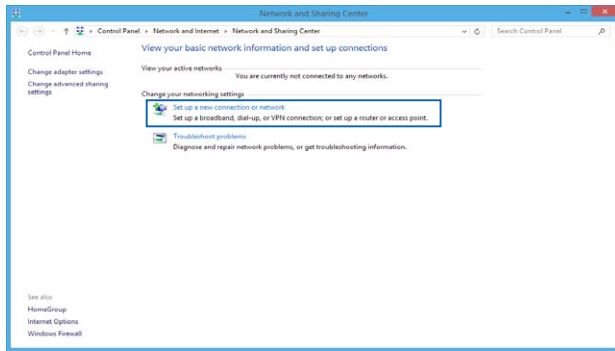


6. Tap **Obtain an IP address automatically** then tap **OK**.

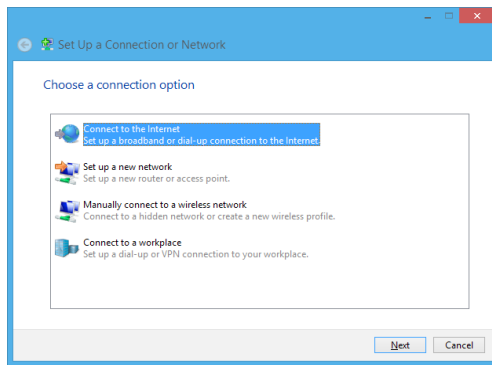


NOTE: Proceed to the next steps if you are using PPPoE connection.

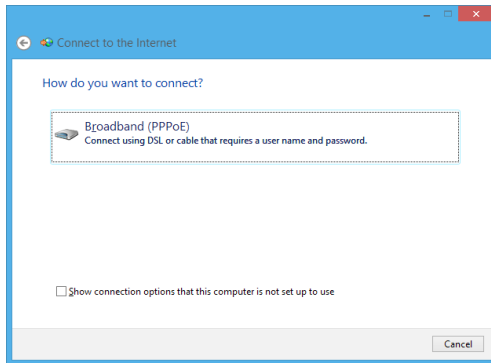
7. Return to the **Network and Sharing Center** window then tap **Set up a new connection or network**.




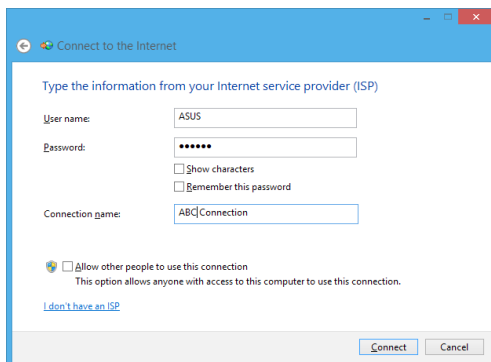
8. Select **Connect to the Internet** then tap **Next**.



9. Tap **Broadband (PPPoE)**.



10. Type your User name, Password, and Connection name then tap **Connect**.
11. Tap **Close** to finish the configuration.
12. Tap  on the taskbar then tap the connection you just created.
13. Type your user name and password then tap **Connect** to start connecting to the Internet.



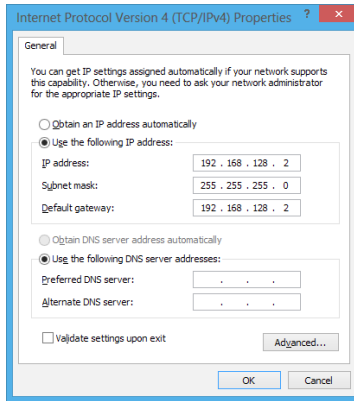
Configuring a static IP network connection



or



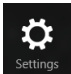

1. Repeat steps 1 to 5 under *Configuring a dynamic IP/PPPoE network connection*.
2. Tap **Use the following IP address**.
3. Type the IP address, Subnet mask and Default gateway from your service provider.
4. If needed, you can also type the preferred DNS server address and alternate DNS server address then tap **OK**.



Turning your ASUS Transformer Book off


You can turn off your ASUS Transformer Book by doing either of the following procedures:



- Tap  from the **Charms bar** then tap  > **Shut down** to do a normal shutdown.

or



- From the log-in screen, tap  > **Shut down**.



- You can also shut down your ASUS Transformer Book using Desktop mode. To do this, launch the desktop then press *alt + f4* to launch the Shut Down window. Select **Shut Down** from the drop-down list then select **OK**.
- If your ASUS Transformer Book is unresponsive, press and hold the power button for at least four (4) seconds until your ASUS Transformer Book turns off.

Putting your ASUS Transformer Book on Sleep mode

To put your ASUS Transformer Book on Sleep mode, press the power button once.



- You can also put your ASUS Transformer Book to Sleep mode using Desktop mode. To do this, launch the desktop then press *alt + f4* to launch the Shut Down window. Select **Sleep** from the drop-down list then select **OK**.

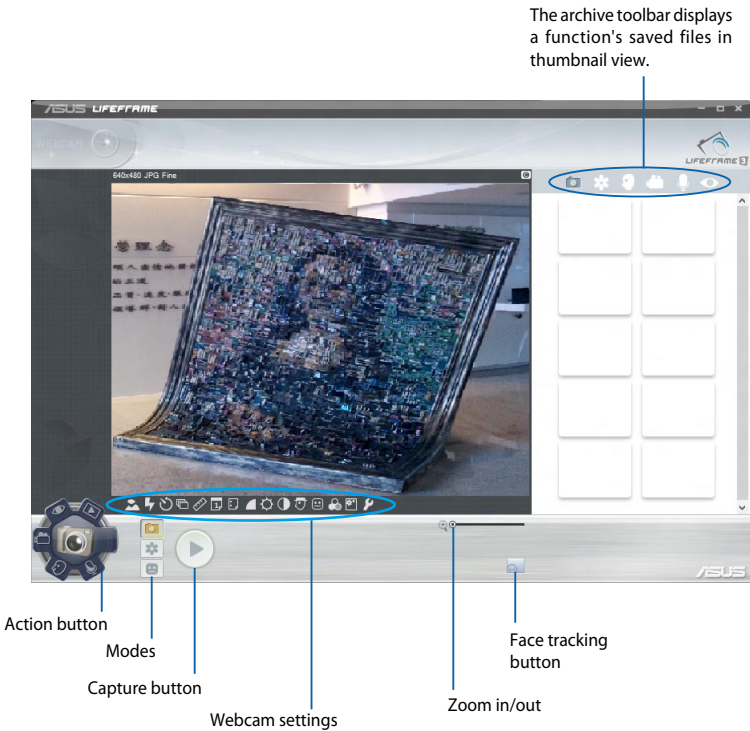
Chapter 4: ***ASUS apps***

Featured ASUS Apps

LifeFrame

Enhance your webcam functions through the LifeFrame app. Create snapshots, edit photos, record videos, record audio files, use your webcam as a security monitoring device, and play games using this app.

To launch LifeFrame



LifeFrame functions



Camera

Use this function to take pictures using your webcam.



Camcorder

Use this function to take videos through your webcam.



Monitor

This function lets you use your webcam as a security video monitor as it automatically detects movement then captures it on photo.



Voice Recorder

Use this function to record audio files in your ASUS Transformer Book.



Game

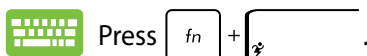
This function lets you play games using the webcam.

Power4Gear Hybrid

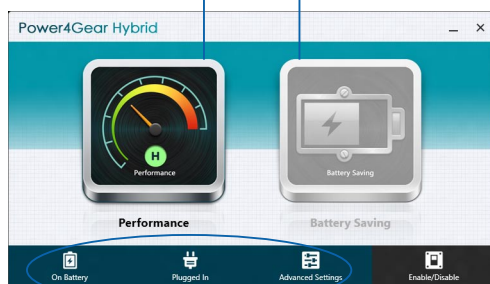
Optimize the performance of your ASUS Transformer Book using the power saving modes in Power4Gear.

NOTE: Unplugging the ASUS Transformer Book from its power adapter automatically switches Power4Gear Hybrid to Battery Saving mode.

To launch Power4Gear Hybrid



Select from these power saving modes.



Use these options to customize your power saving mode.

Allows you to hide the desktop icons onscreen and turns the presentation mode on or off.

Performance mode

Use this mode when doing high-performance activities like playing games or conducting business presentations using your ASUS Transformer Book.

Battery Saving mode

This mode extends your ASUS Transformer Book's battery life while plugged in to the power adapter or while running on battery power only.

Instant On

Save battery power while your ASUS Transformer Book is on deep sleep mode (Deep S3) using Instant On.

NOTE: Deep S3 is a technology that lets you save more battery power while your ASUS Transformer Book is on sleep mode.

IMPORTANT! The standby time varies according to your ASUS Transformer Book's remaining battery capacity, computer model, configuration, and operating conditions.

Performance mode

This mode is default-enabled in your ASUS Transformer Book. It allows the system to return to its last working state in two seconds, even after your ASUS Transformer Book has entered into deep sleep mode.



Battery saving mode

This mode enables longer standby times allowing the battery to last for up to thirty (30) days or more. When enabled, the ASUS Transformer Book returns to its last working state in as fast as seven seconds, four hours after entering into deep sleep mode.



Tap this to activate the battery saving mode.

ASUS Transformer Book App Launcher

Your ASUS Transformer Book comes with a home page that provides a one-tap access to some of the ASUS apps you can launch on Windows® 8.

To access the ASUS Transformer Book App Launcher:



Tap



on the Start screen.

or

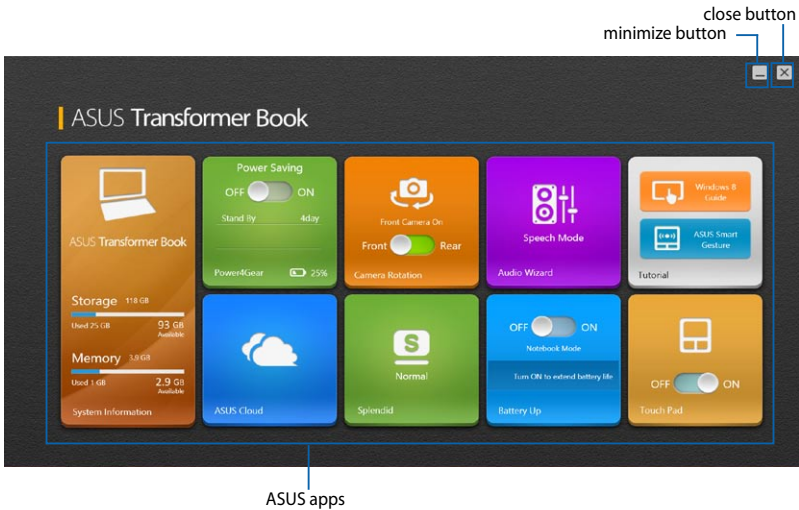


Press .

ASUS Transformer Book App Launcher

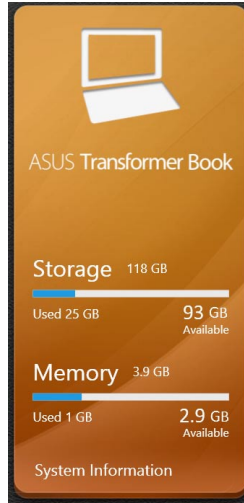
NOTE:

- The ASUS Transformer Book App Launcher may change or be updated without prior notice.
- The following screenshots are for reference only. The actual information displayed on your ASUS Transformer Book may vary.
- The Camera Rotation and Touch Pad apps are available on selected models only.



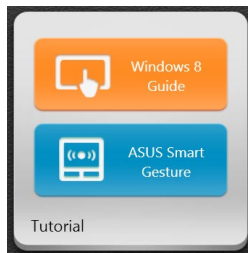
System Information

This app provides a system information overview of your ASUS Transformer Book's SSD (Solid State Drive) storage space and your unit's memory space.



Tutorial

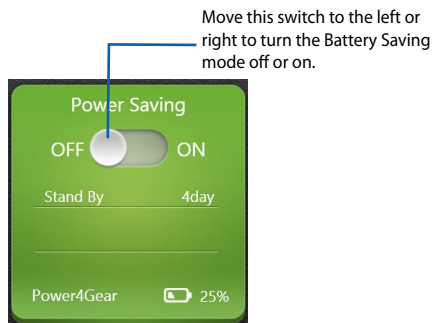
Launch the Windows® 8 Guide and ASUS Smart Gesture AP by tapping on the icons inside the Tutorial app.



Power4Gear

The Power4Gear app inside the ASUS Transformer Book App Launcher allows you to quickly switch between these two power saving options: Performance and Battery Saving.

NOTE: For more details on Power4Gear, refer to the *Power4Gear Hybrid* section in this manual.

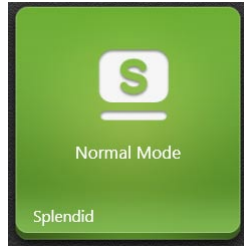


Splendid

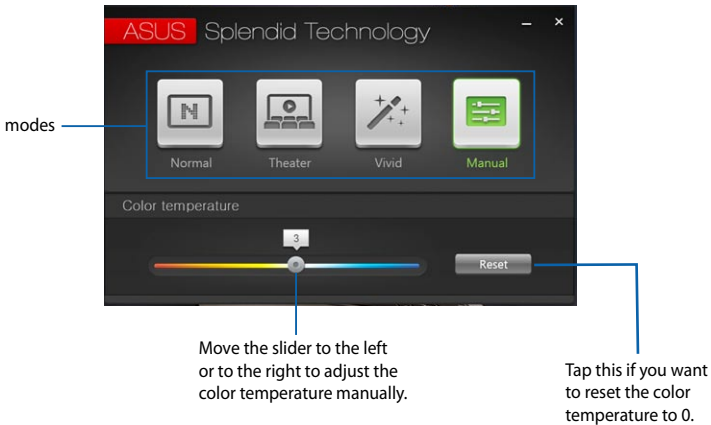
Tap this app to launch the ASUS Splendid Video Enhancement Technology window and switch between these display modes: Normal, Theater, Vivid, Manual.

To use Splendid:

1. Tap **Splendid** on the ASUS Transformer Book App Launcher.



2. In the ASUS Splendid Technology window, tap the mode you want to activate.



NOTE: The **Color temperature** bar only appears when you select the **Manual** mode.

Audio Wizard

AudioWizard allows you to customize the sound modes of your ASUS Transformer Book for a clearer audio output that fits actual usage scenarios.

To use AudioWizard:

1. Tap **AudioWizard** on the ASUS Transformer Book App Launcher.



2. In the AudioWizard window, tap the sound mode you want to activate.



NOTE: Tap **OFF** if you want to deactivate any of the sound modes you previously saved.

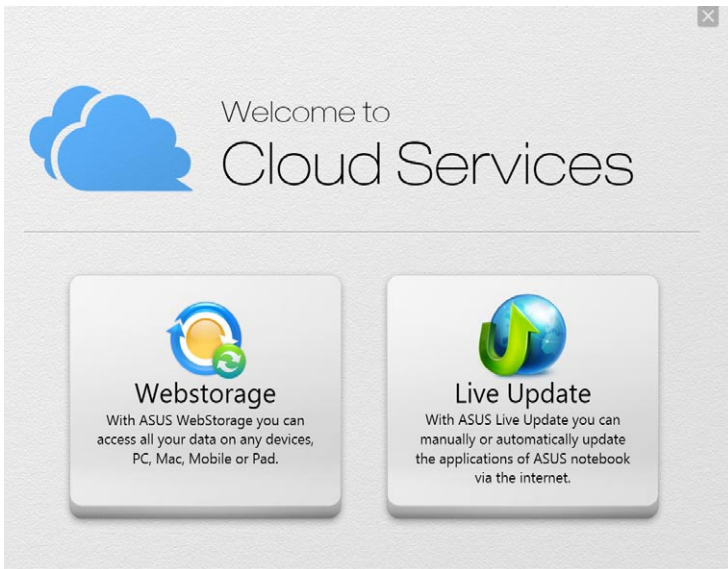
3. Tap **Done** to save the selected sound mode and exit the AudioWizard window.

ASUS Cloud

Tap this app to launch the ASUS Cloud Services home page and get quick access to the following cloud-based apps: ASUS Webstorage and Live Update



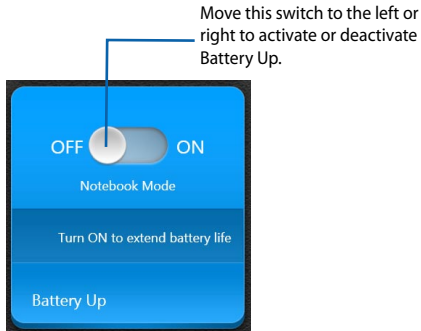
ASUS Cloud Services home page



Battery Up

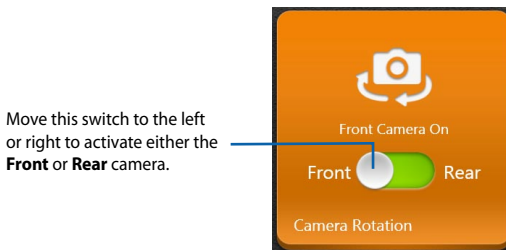
This app allows you to reserve the mobile dock's full battery power to supply power to the detachable touch display panel.

IMPORTANT! This app is only activated when your ASUS Transformer Book runs on battery mode. To enable this app, ensure that your ASUS Transformer Book is unplugged from a power source.



Camera Rotation (on selected models)

This app allows you to switch between using the front or the rear camera of your ASUS Transformer Book.



Touch Pad (on selected models)

This app allows you to activate or deactivate the touchpad of your ASUS Transformer Book so you can use the keyboard more conveniently.

Move this switch to the left or right to toggle between **OFF** and **ON**.



Chapter 5:

Power-on Self Test (POST)

The Power-on Self Test (POST)

The Power-on Self Test (POST) is a series of software-controlled diagnostic tests that run when you turn on or restart your ASUS Transformer Book. The software that controls the POST is installed as a permanent part of the ASUS Transformer Book's architecture.

Using POST to access BIOS and Troubleshoot

During POST, you can access the BIOS settings or run troubleshooting options using the function keys of your ASUS Transformer Book. You may refer to the following information for more details.

BIOS

The Basic Input and Output System (BIOS) stores system hardware settings that are needed for system startup in the ASUS Transformer Book.

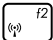
The default BIOS settings apply to most conditions of your ASUS Transformer Book. Do not change the default BIOS settings except in the following circumstances:

- An error message appears onscreen during system bootup and requests you to run the BIOS Setup.
- You have installed a new system component that requires further BIOS settings or updates.

WARNING: Using inappropriate BIOS settings may result to system instability or boot failure. We strongly recommend that you change the BIOS settings only with the help of a trained service personnel.

Accessing BIOS



Restart your ASUS Transformer Book then press  during POST.

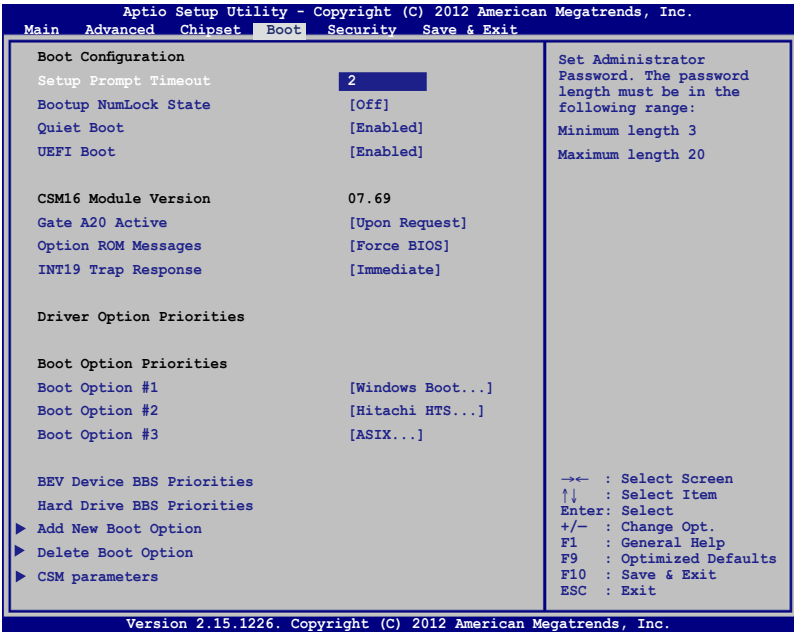
BIOS Settings

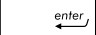
NOTE: The BIOS screens in this section are for reference only. The actual screens may differ by model and territory.

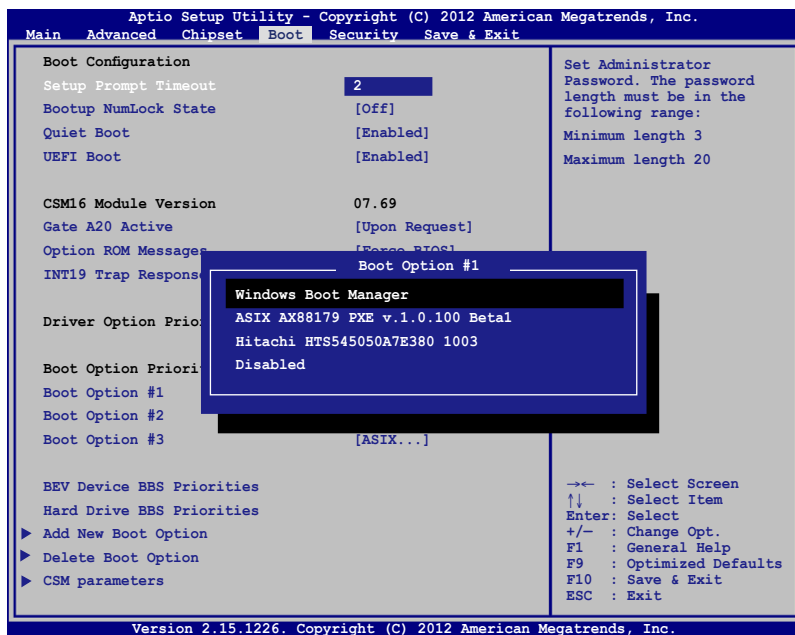
Boot

This menu allows you to set your boot option priorities. You may refer to the following procedures when setting your boot priority.

1. On the **Boot** screen, select **Boot Option #1**.



2. Press  and select a device as the **Boot Option #1**.

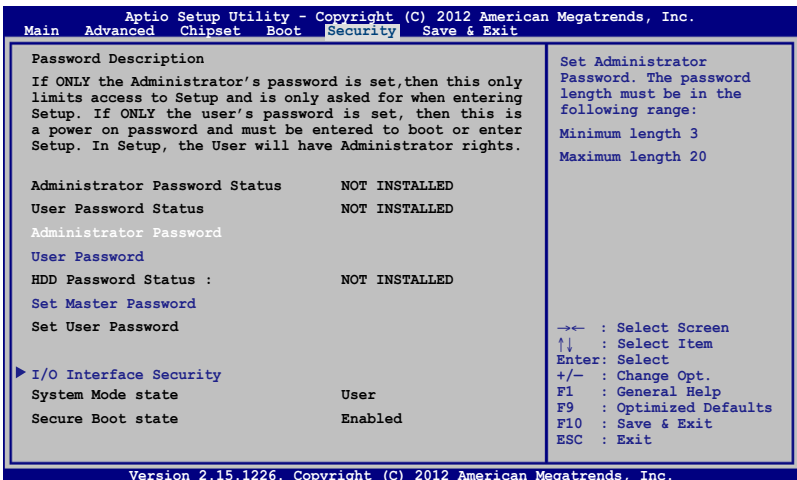


Security


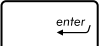
This menu allows you to set up the administrator and user password of your ASUS Transformer Book. It also allows you to control the access to your ASUS Transformer Book's hard disk drive, input/output (I/O) interface, and USB interface.

NOTE:

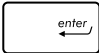
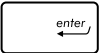
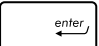
- If you install a **User Password**, you will be prompted to input this before entering your ASUS Transformer Book's operating system.
- If you install an **Administrator Password**, you will be prompted to input this before entering BIOS.



To set the password:

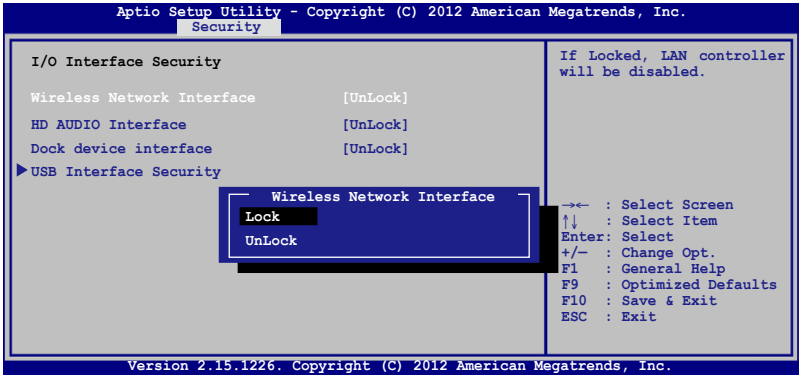
1. On the **Security** screen, select **Administrator Password** or **User Password**.
2. Type in a password then press .
3. Re-type to confirm the password then press .

To clear the password:

1. On the **Security** screen, select **Administrator Password** or **User Password**.
2. Type in the current password then press .
3. Leave the **Create New Password** field blank then press .
4. Select **Yes** in the confirmation box then press .

I/O Interface Security

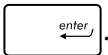
In the Security menu, you can access I/O Interface Security to lock or unlock some interface functions of your ASUS Transformer Book.



NOTE: Setting the **Dock device interface** to **Lock** disables all the I/O ports on the ASUS Transformer Book's mobile dock.

To lock an interface:

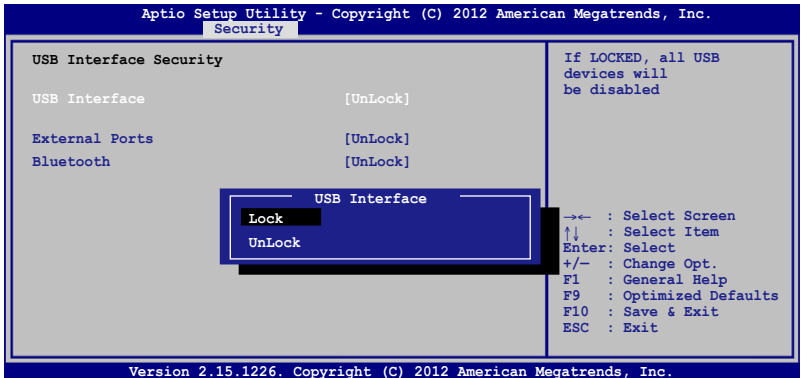
1. On the **Security** screen, select **I/O Interface Security**.
2. Select an interface you would like to lock then press



3. Select **Lock**.

USB Interface Security

Through the I/O Interface Security menu, you can also access USB Interface Security to lock or unlock ports and devices.



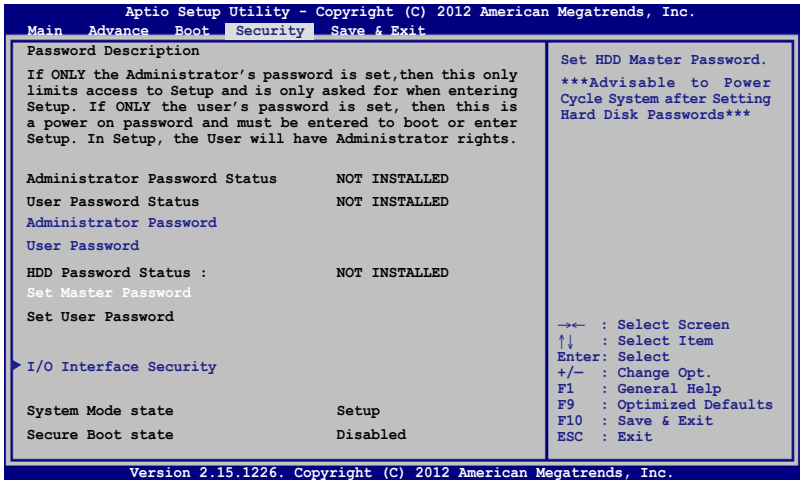
To lock the USB interface:

1. On the **Security** screen, select **I/O Interface Security > USB Interface Security**.
2. Select an interface that you would like to lock then select **Lock**.

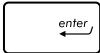
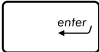
NOTE: Setting the **USB Interface** to **Lock** also locks and hides the **External Ports** and other devices included under **USB Interface Security**.

Set Master Password

In the Security menu, you can use **Set Master Password** to set up a password-enabled access to your hard disk drive.

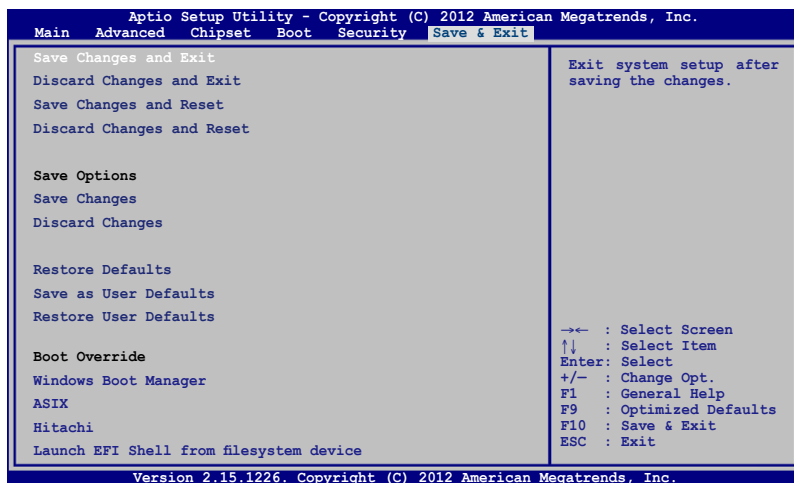


To set the HDD password:

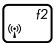
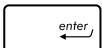
1. On the **Security** screen, select **Set Master Password**.
2. Type in a password then press .
3. Re-type to confirm the password then press .
4. Select **Set User Password** then repeat the previous steps to set up the user password.

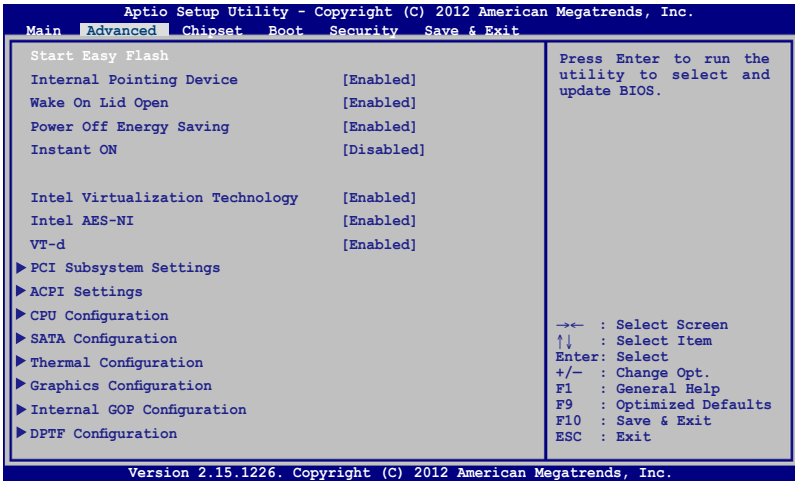
Save & Exit

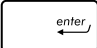
To keep your configuration settings, select **Save Changes and Exit** before exiting the BIOS.

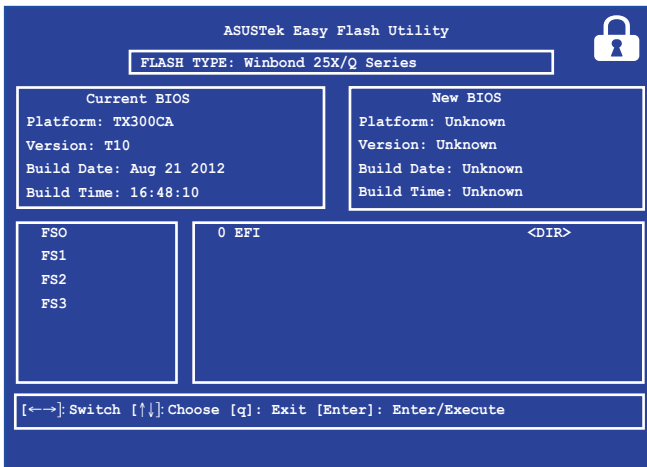


To update the BIOS:

1. Verify the ASUS Transformer Book's exact model then download the latest BIOS file for your model from the ASUS website.
2. Save a copy of the downloaded BIOS file to a flash disk drive.
3. Connect your flash disk drive to your ASUS Transformer Book.
4. Restart your ASUS Transformer Book then press  during POST.
5. From the BIOS menu, Select **Advanced > Start Easy Flash**, then press .

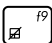


6. Locate your downloaded BIOS file in the flash disk drive then press .



7. After the BIOS update process, select **Exit > Restore Defaults** to restore the system to its default settings.

Troubleshoot

By pressing  during POST, you can access Windows® 8 troubleshoot options which includes the following:

- **Refresh your PC**
- **Reset your PC**
- **Advanced options**

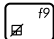
IMPORTANT! The ASUS Transformer Book's touch panel display should be connected to the mobile dock to enable any of these options.

Refresh your PC

Use **Refresh your PC** if you want to refresh your system without losing your current files and applications.

To access this during POST:



1. Restart your ASUS Transformer Book then press  during POST.



2. Wait for Windows® to load the Choose an option screen then tap **Troubleshoot**.
3. Tap **Refresh your PC**.
4. In the Refresh your PC screen, read the bullet points to learn more about using this option then tap **Next**.
5. Tap the account you would like to refresh.
6. Type your account password then tap **Continue**.
7. Tap **Refresh**.

IMPORTANT! Ensure that your ASUS Transformer Book is plugged in to a power source before refreshing your system.


Reset your PC

IMPORTANT! Back up all your data before performing this option.

Use **Reset your PC** to restore your ASUS Transformer Book to its default settings.

To access this during POST:



1. Restart your ASUS Transformer Book then press  during POST.



2. Wait for Windows® to load the Choose an option screen then tap **Troubleshoot**.
3. Tap **Reset your PC**.
4. In the Reset your PC screen, read the bullet points to learn more about using this option then tap **Next**.
5. Tap your preferred reset option: **Just remove my files** or **Fully clean the drive**.
6. Tap **Reset**.


IMPORTANT! Ensure that your ASUS Transformer Book is plugged in to a power source before resetting your system.

Advanced options

Use **Advanced options** to perform additional troubleshooting options in your ASUS Transformer Book.

To access this during POST:



1. Restart your ASUS Transformer Book then press  during POST.




2. Wait for Windows® to load the Choose an option screen then tap **Troubleshoot**.
3. Tap **Advanced options**.
4. In the Advanced options screen, select the troubleshooting option you wish to perform.
5. Follow the succeeding steps to complete the process.

Using System Image Recovery

Under **Advanced options**, you can use **System Image Recovery** to recover your system using your ASUS Transformer Book's original image file.

To access this during POST:



1. Restart your ASUS Transformer Book then press  during POST.



2. Wait for Windows® to load the Choose an option screen then tap **Troubleshoot**.
3. Tap **Advanced options**.

4. In the Advanced options screen, select **System Image Recovery**.
5. Choose an account you would like to recover using a system image file.
6. Type your account password then tap **Continue**.
7. Select **Use the latest available system image (recommended)**, then tap **Next**. You can also choose **Select a system image** if your system image is in an external device or DVD.
8. Follow the succeeding steps to complete the system image recovery procedure.

NOTE: We strongly recommend that you regularly backup your system to prevent data loss in case your ASUS Transformer Book stops working.

Appendices

DVD-ROM Drive Information (on selected models)

The DVD-ROM drive allows you to view and create your own CDs and DVDs. You can purchase an optional DVD viewer software to view DVD titles.

Regional Playback Information

Playback of DVD movie titles involves decoding MPEG2 video, digital AC3 audio and decryption of CSS protected content. CSS (sometimes called copy guard) is the name given to the content protection scheme adopted by the motion picture industry to satisfy a need to protect against unlawful content duplication.

Although the design rules imposed on CSS licensors are many, one rule that is most relevant is playback restrictions on regionalized content. In order to facilitate geographically staggered movie releases, DVD video titles are released for specific geographic regions as defined in "Region Definitions" below. Copyright laws require that all DVD movies be limited to a particular region (usually coded to the region at which it is sold). While DVD movie content may be released for multiple regions, CSS design rules require that any system capable of playing CSS encrypted content must only be capable of playing one region.

IMPORTANT! The region setting may be changed up to five times using the viewer software, then it can only play DVD movies for the last region setting. Changing the region code after that will require factory resetting which is not covered by warranty. If resetting is desired, shipping and resetting costs will be at the expense of the user.

Region Definitions

Region 1

Canada, US, US Territories

Region 2

Czech, Egypt, Finland, France, Germany, Gulf States, Hungary, Iceland, Iran, Iraq, Ireland, Italy, Japan, Netherlands, Norway, Poland, Portugal, Saudi Arabia, Scotland, South Africa, Spain, Sweden, Switzerland, Syria, Turkey, UK, Greece, Former Yugoslav Republics, Slovakia

Region 3

Burma, Indonesia, South Korea, Malaysia, Philippines, Singapore, Taiwan, Thailand, Vietnam

Region 4

Australia, Caribbean (Except US Territories), Central America, New Zealand, Pacific Islands, South America

Region 5

CIS, India, Pakistan, Rest of Africa, Russia, North Korea

Region 6

China

Blu-ray ROM Drive Information (on selected models)

The Blu-ray ROM Drive allows you to view high definition (HD) videos and other disc file formats such as DVDs and CDs.

Region Definitions

Region A

North, Central and South American countries, and their territories; Taiwan, Hong Kong, Macao, Japan, Korea (South and North), South East Asian countries and their territories.

Region B

European, African, and South West Asian countries and their territories; Australia and New Zealand.

Region C

Central, South Asian, Eastern European countries and their territories; China and Mongolia.

NOTE: Refer to Blu-ray Disc website at www.blu-raydisc.com/en/Technical/FAQs/Blu-rayDiscforVideo.aspx for more details.

Internal Modem Compliancy

The ASUS Transformer Book with internal modem model complies with JATE (Japan), FCC (US, Canada, Korea, Taiwan), and CTR21. The internal modem has been approved in accordance with Council Decision 98/482/EC for pan-European single terminal connection to the public switched telephone network (PSTN). However due to differences between the individual PSTNs provided in different countries, the approval does not, of itself, give an unconditional assurance of successful operation on every PSTN network termination point. In the event of problems you should contact your equipment supplier in the first instance.

Overview

On 4th August 1998 the European Council Decision regarding the CTR 21 has been published in the Official Journal of the EC. The CTR 21 applies to all non voice terminal equipment with DTMF-dialling which is intended to be connected to the analogue PSTN (Public Switched Telephone Network).

CTR 21 (Common Technical Regulation) for the attachment requirements for connection to the analogue public switched telephone networks of terminal equipment (excluding terminal equipment supporting the voice telephony justified case service) in which network addressing, if provided, is by means of dual tone multifrequency signalling.

Network Compatibility Declaration

Statement to be made by the manufacturer to the Notified Body and the vendor: "This declaration will indicate the networks with which the equipment is designed to work and any notified networks with which the equipment may have inter-working difficulties"

Network Compatibility Declaration

Statement to be made by the manufacturer to the user: "This declaration will indicate the networks with which the equipment is designed to work and any notified networks with which the equipment may have inter-working difficulties. The manufacturer shall also associate a statement to make it clear where network compatibility is dependent on physical and software switch settings. It will also advise the user to contact the vendor if it is desired to use the equipment on another network."

Up to now the Notified Body of CETECOM issued several pan-European approvals using CTR 21. The results are Europe's first modems which do not require regulatory approvals in each individual European country.

Non-Voice Equipment

Answering machines and loud-speaking telephones can be eligible as well as modems, fax machines, auto-dialers and alarm systems. Equipment in which the end-to-end quality of speech is controlled by regulations (e.g. handset telephones and in some countries also cordless telephones) is excluded.

This table shows the countries currently under the CTR21 standard.

Country	Applied	More Testing
Austria ¹	Yes	No
Belgium	Yes	No
Czech Republic	No	Not Applicable
Denmark ¹	Yes	Yes
Finland	Yes	No
France	Yes	No
Germany	Yes	No
Greece	Yes	No
Hungary	No	Not Applicable
Iceland	Yes	No
Ireland	Yes	No
Italy	Still Pending	Still Pending
Israel	No	No
Lichtenstein	Yes	No
Luxemburg	Yes	No
The Netherlands ¹	Yes	Yes
Norway	Yes	No
Poland	No	Not Applicable
Portugal	No	Not Applicable
Spain	No	Not Applicable
Sweden	Yes	No
Switzerland	Yes	No
United Kingdom	Yes	No

This information was copied from CETECOM and is supplied without liability. For updates to this table, you may visit http://www.cetecom.de/technologies/ctr_21.html

1 National requirements will apply only if the equipment may use pulse dialling (manufacturers may state in the user guide that the equipment is only intended to support DTMF signalling, which would make any additional testing superfluous).

In The Netherlands additional testing is required for series connection and caller ID facilities.

Federal Communications Commission Statement

This device complies with FCC Rules Part 15. Operation is subject to the following two conditions:

- This device may not cause harmful interference.
- This device must accept any interference received, including interference that may cause undesired operation.

This equipment has been tested and found to comply with the limits for a class B digital device, pursuant to Part 15 of the Federal Communications Commission (FCC) rules. These limits are designed to provide reasonable protection against harmful interference in a residential installation. This equipment generates, uses, and can radiate radio frequency energy and, if not installed and used in accordance with the instructions, may cause harmful interference to radio communications. However, there is no guarantee that interference will not occur in a particular installation. If this equipment does cause harmful interference to radio or television reception, which can be determined by turning the equipment off and on, the user is encouraged to try to correct the interference by one or more of the following measures:

- Reorient or relocate the receiving antenna.
- Increase the separation between the equipment and receiver.
- Connect the equipment into an outlet on a circuit different from that to which the receiver is connected.
- Consult the dealer or an experienced radio/TV technician for help.

WARNING! The use of a shielded-type power cord is required in order to meet FCC emission limits and to prevent interference to the nearby radio and television reception. It is essential that only the supplied power cord be used. Use only shielded cables to connect I/O devices to this equipment. You are cautioned that changes or modifications not expressly approved by the party responsible for compliance could void your authority to operate the equipment.

(Reprinted from the Code of Federal Regulations #47, part 15.193, 1993. Washington DC: Office of the Federal Register, National Archives and Records Administration, U.S. Government Printing Office.)

RF Exposure Information (SAR)

This device meets the government's requirements for exposure to radio waves. This device is designed and manufactured not to exceed the emission limits for exposure to radio frequency (RF) energy set by the Federal Communications Commission of the U.S. Government.

The exposure standard employs a unit of measurement known as the Specific Absorption Rate, or SAR. The SAR limit set by the FCC is 1.6 W/kg. Tests for SAR are conducted using standard operating positions accepted by the FCC with the EUT transmitting at the specified power level in different channels.

The highest SAR value for the device as reported to the FCC is 0.146 W/kg when placed next to the body.

FCC Radio Frequency (RF) Exposure Caution Statement

WARNING! Any changes or modifications not expressly approved by the party responsible for compliance could void the user's authority to operate this equipment. "The manufacture declares that this device is limited to Channels 1 through 11 in the 2.4GHz frequency by specified firmware controlled in the USA."

This equipment complies with FCC radiation exposure limits set forth for an uncontrolled environment. To maintain compliance with FCC RF exposure compliance requirements, please avoid direct contact to the transmitting antenna during transmitting. End users must follow the specific operating instructions for satisfying RF exposure compliance.

Declaration of Conformity (R&TTE directive 1999/5/EC)

The following items were completed and are considered relevant and sufficient:

- Essential requirements as in [Article 3]
- Protection requirements for health and safety as in [Article 3.1a]
- Testing for electric safety according to [EN 60950]
- Protection requirements for electromagnetic compatibility in [Article 3.1b]
- Testing for electromagnetic compatibility in [EN 301 489-1] & [EN 301 489-17]
- Effective use of the radio spectrum as in [Article 3.2]
- Radio test suites according to [EN 300 328-2]

CE Marking



CE marking for devices without wireless LAN/Bluetooth

The shipped version of this device complies with the requirements of the EEC directives 2004/108/EC “Electromagnetic compatibility” and 2006/95/EC “Low voltage directive”.



CE marking for devices with wireless LAN/ Bluetooth

This equipment complies with the requirements of Directive 1999/5/EC of the European Parliament and Commission from 9 March, 1999 governing Radio and Telecommunications Equipment and mutual recognition of conformity.

IC Radiation Exposure Statement for Canada

This equipment complies with IC radiation exposure limits set forth for an uncontrolled environment. To maintain compliance with IC RF exposure compliance requirements, please avoid direct contact to the transmitting antenna during transmitting. End users must follow the specific operating instructions for satisfying RF exposure compliance.

Operation is subject to the following two conditions:

- This device may not cause interference and
- This device must accept any interference, including interference that may cause undesired operation of the device.

To prevent radio interference to the licensed service (i.e. co-channel Mobile Satellite systems) this device is intended to be operated indoors and away from windows to provide maximum shielding. Equipment (or its transmit antenna) that is installed outdoors is subject to licensing.

This device complies with Industry Canada licence-exempt RSS standard(s).

Déclaration d'Industrie Canada relative à l'exposition aux ondes radio

Cet appareil est conforme aux limites d'exposition aux radiations d'Industrie Canada définies pour un environnement non-contrôlé. Pour maintenir la conformité avec les exigences d'exposition RF d'IC, veuillez éviter tout contact direct avec l'antenne pendant l'émission. Les utilisateurs finaux doivent suivre les instructions de fonctionnement spécifiques pour satisfaire la conformité aux expositions RF.

Son utilisation est sujette aux deux conditions suivantes :

- Cet appareil ne peut pas causer d'interférence, et
- Cet appareil doit accepter toute interférence, y compris les interférences qui pourraient causer un fonctionnement non souhaité de l'appareil.

Pour éviter les interférences radio avec le service sous licence (c'est à-dire le partage de canal avec les systèmes de téléphonie satellite), cet appareil est destiné à être utilisé en intérieur et loin des fenêtres pour fournir un blindage maximal. Tout appareil (ou son antenne d'émission) qui est installé en extérieur est sujet à cette licence.

Le présent appareil est conforme aux CNR d'Industrie Canada applicables aux appareils radio exempts de licence.

Wireless Operation Channel for Different Domains

N. America	2.412-2.462 GHz	Ch01 through CH11
Japan	2.412-2.484 GHz	Ch01 through Ch14
Europe ETSI	2.412-2.472 GHz	Ch01 through Ch13

France Restricted Wireless Frequency Bands

Some areas of France have a restricted frequency band. The worst case maximum authorized power indoors are:

- 10mW for the entire 2.4 GHz band (2400 MHz–2483.5 MHz)
- 100mW for frequencies between 2446.5 MHz and 2483.5 MHz

NOTE: Channels 10 through 13 inclusive operate in the band 2446.6 MHz to 2483.5 MHz.

There are few possibilities for outdoor use: on private property or on the private property of public persons, use is subject to a preliminary authorization procedure by the Ministry of Defense, with maximum authorized power of 100mW in the 2446.5–2483.5 MHz band. Use outdoors on public property is not permitted.

In the departments listed below, for the entire 2.4 GHz band:

- Maximum authorized power indoors is 100mW
- Maximum authorized power outdoors is 10mW

Departments in which the use of the 2400–2483.5 MHz band is permitted with an EIRP of less than 100mW indoors and less than 10mW outdoors:

01 Ain	02 Aisne	03 Allier
05 Hautes Alpes	08 Ardennes	09 Ariège
11 Aude	12 Aveyron	16 Charente
24 Dordogne	25 Doubs	26 Drôme
32 Gers	36 Indre	37 Indre et Loire
41 Loir et Cher	45 Loiret	50 Manche
55 Meuse	58 Nièvre	59 Nord
60 Oise	61 Orne	63 Puy du Dôme
64 Pyrénées Atlantique	66 Pyrénées Orientales	67 Bas Rhin
68 Haut Rhin	70 Haute Saône	71 Saône et Loire
75 Paris	82 Tarn et Garonne	84 Vaucluse
88 Vosges	89 Yonne	90 Territoire de Belfort
94 Val de Marne		

This requirement is likely to change over time, allowing you to use your wireless LAN card in more areas within France. Please check with ART for the latest information (www.arcep.fr)

NOTE: Your WLAN Card transmits less than 100mW, but more than 10mW.

UL Safety Notices

Required for UL 1459 covering telecommunications (telephone) equipment intended to be electrically connected to a telecommunication network that has an operating voltage to ground that does not exceed 200V peak, 300V peak-to-peak, and 105V rms, and installed or used in accordance with the National Electrical Code (NFPA 70).

When using the ASUS Transformer Book modem, basic safety precautions should always be followed to reduce the risk of fire, electric shock, and injury to persons, including the following:

- DO NOT use the ASUS Transformer Book near water, for example, near a bath tub, wash bowl, kitchen sink or laundry tub, in a wet basement or near a swimming pool.
- DO NOT use the ASUS Transformer Book during an electrical storm. There may be a remote risk of electric shock from lightning.
- DO NOT use the ASUS Transformer Book in the vicinity of a gas leak.

Required for UL 1642 covering primary (nonrechargeable) and secondary (rechargeable) lithium batteries for use as power sources in products. These batteries contain metallic lithium, or a lithium alloy, or a lithium ion, and may consist of a single electrochemical cell or two or more cells connected in series, parallel, or both, that convert chemical energy into electrical energy by an irreversible or reversible chemical reaction.

- Do not dispose the ASUS Transformer Book battery pack in a fire, as they may explode. Check with local codes for possible special disposal instructions to reduce the risk of injury to persons due to fire or explosion.
- Do not use power adapters or batteries from other devices to reduce the risk of injury to persons due to fire or explosion. Use only UL certified power adapters or batteries supplied by the manufacturer or authorized retailers.

Power Safety Requirement

Products with electrical current ratings up to 6A and weighing more than 3Kg must use approved power cords greater than or equal to: H05VV-F, 3G, 0.75mm² or H05VV-F, 2G, 0.75mm².

TV Tuner Notices

Note to CATV System Installer—Cable distribution system should be grounded (earthed) in accordance with ANSI/NFPA 70, the National Electrical Code (NEC), in particular Section 820.93, Grounding of Outer Conductive Shield of a Coaxial Cable – installation should include bonding the screen of the coaxial cable to the earth at the building entrance.

REACH

Complying with the REACH (Registration, Evaluation, Authorization, and Restriction of Chemicals) regulatory framework, we publish the chemical substances in our products at ASUS REACH website at <http://csr.asus.com/english/REACH.htm>.

Nordic Lithium Cautions (for lithium-ion batteries)

CAUTION! Danger of explosion if battery is incorrectly replaced. Replace only with the same or equivalent type recommended by the manufacturer. Dispose of used batteries according to the manufacturer's instructions. (English)

ATTENZIONE! Rischio di esplosione della batteria se sostituita in modo errato. Sostituire la batteria con un una di tipo uguale o equivalente consigliata dalla fabbrica. Non disperdere le batterie nell'ambiente. (Italian)

VORSICHT! Explosionsgefahr bei unsachgemäßen Austausch der Batterie. Ersatz nur durch denselben oder einem vom Hersteller empfohlenem ähnlichen Typ. Entsorgung gebrauchter Batterien nach Angaben des Herstellers. (German)

ADVARSEL! Lithiumbatteri - Eksplosionsfare ved fejlagtig håndtering. Udskiftning må kun ske med batteri af samme fabrikat og type. Levér det brugte batteri tilbage til leverandøren. (Danish)

WARNING! Explosionsfara vid felaktigt batteribyte. Använd samma batterityp eller en ekvivalent typ som rekommenderas av apparattillverkaren. Kassera använt batteri enligt fabrikantens instruktion. (Swedish)

VAROITUS! Paristo voi räjähtää, jos se on virheellisesti asennettu. Vaihda paristo ainoastaan laitevalmistajan suositteluun tyypin. Hävitä käytetty paristo valmistajan ohjeiden mukaisesti. (Finnish)

ATTENTION! Il y a danger d'explosion s'il y a remplacement incorrect de la batterie. Remplacer uniquement avec une batterie du même type ou d'un type équivalent recommandé par le constructeur. Mettre au rebut les batteries usagées conformément aux instructions du fabricant. (French)

ADVARSEL! Eksplosjonsfare ved feilaktig skifte av batteri. Benytt samme batteritype eller en tilsvarende type anbefalt av apparatfabrikanten. Brukte batterier kasseres i henhold til fabrikantens instruksjoner. (Norwegian)

標準品以外の使用は、危険の元になります。交換品を使用する場合、製造者に指定されるものを使って下さい。製造者の指示に従って処理して下さい。
(Japanese)

ВНИМАНИЕ! При замене аккумулятора на аккумулятор иного типа возможно его возгорание. Утилизируйте аккумулятор в соответствии с инструкциями производителя. (Russian)

Optical Drive Safety Information

Laser Safety Information

CD-ROM Drive Safety Warning

CLASS 1 LASER PRODUCT

WARNING! To prevent exposure to the optical drive's laser, do not attempt to disassemble or repair the optical drive by yourself. For your safety, contact a professional technician for assistance.

Service warning label

WARNING! INVISIBLE LASER RADIATION WHEN OPEN. DO NOT STARE INTO BEAM OR VIEW DIRECTLY WITH OPTICAL INSTRUMENTS.

CDRH Regulations

The Center for Devices and Radiological Health (CDRH) of the U.S. Food and Drug Administration implemented regulations for laser products on August 2, 1976. These regulations apply to laser products manufactured from August 1, 1976. Compliance is mandatory for products marketed in the United States.

WARNING! Use of controls or adjustments or performance of procedures other than those specified herein or in the laser product installation guide may result in hazardous radiation exposure.

Macrovision Corporation Product Notice

This product incorporates copyright protection technology that is protected by method claims of certain U.S.A. patents and other intellectual property rights owned by Macrovision Corporation and other rights owners. Use of this copyright protection technology must be authorized by Macrovision Corporation, and is intended for home and other limited viewing uses only *unless otherwise authorized by Macrovision Corporation*. Reverse engineering or disassembly is prohibited.

CTR 21 Approval (for ASUS Transformer Book with built-in Modem)

Danish

„Udstyret er i henhold til Rådets beslutning 98/482/EF EU-godkendt til at blive opkoblet på de offentlige telefonnet som enkeltforbundet terminal. På grund af forskelle mellem de offentlige telefonnet i de forskellige lande giver godkendelsen dog ikke i sig selv ubetinget garanti for, at udstyret kan fungere korrekt på samtlige nettermineringspunkter på de offentlige telefonnet.

I tilfælde af problemer bør De i første omgang henvende Dem til leverandøren af udstyret.

Dutch

„Dit apparaat is goedgekeurd volgens Beschikking 98/482/EG van de Raad voor de pan-Europese aansluiting van enkelvoudige eindapparatuur op het openbare geschakelde telefoonnetwerk (PSTN). Gezien de verschillen tussen de individuele PSTN's in de verschillende landen, biedt deze goedkeuring op zichzelf geen onvoorwaardelijke garantie voor een succesvolle werking op elk PSTN-netwerkaansluitpunt.

Neem bij problemen in eerste instantie contact op met de leverancier van het apparaat.

English

„The equipment has been approved in accordance with Council Decision 98/482/EC for pan-European single terminal connection to the public switched telephone network (PSTN). However, due to differences between the individual PSTNs provided in different countries, the approval does not, of itself, give an unconditional assurance of successful operation on every PSTN network termination point.

In the event of problems, you should contact your equipment supplier in the first instance.

Finnish

„Tämä laite on hyväksytty neuvoston päätöksen 98/482/EY mukaisesti liitettäväksi yksittäisenä laitteena yleiseen kytkentäiseen puhelinverkkoon (PSTN) EU:n jäsenvaltioissa. Eri maiden yleisten kytkentäisten puhelinverkkojen välillä on kuitenkin eroja, joten hyväksyntä ei sellaisenaan takaa häiriötöntä toimintaa kaikkien yleisten kytkentäisten puhelinverkkojen liittytapistäissä.

Ongelmien ilmetessä otakaa viipymättä yhteyttä laitteen toimittajaan.

French

„Cet équipement a reçu l'agrément, conformément à la décision 98/482/CE du Conseil, concernant la connexion paneuropéenne de terminal unique aux réseaux téléphoniques publics commutés (RTPC). Toutefois, comme il existe des différences d'un pays à l'autre entre les RTPC, l'agrément en soi ne constitue pas une garantie absolue de fonctionnement optimal à chaque point de terminaison du réseau RTPC.

En cas de problème, vous devez contacter en premier lieu votre fournisseur.

German

„Dieses Gerät wurde gemäß der Entscheidung 98/482/EG des Rates europaweit zur Anschaltung als einzelne Endeinrichtung an das öffentliche Fernsprechnet zugelassen. Aufgrund der zwischen den öffentlichen Fernsprechnetzen verschiedener Staaten bestehenden Unterschiede stellt diese Zulassung an sich jedoch keine unbedingte Gewähr für einen erfolgreichen Betrieb des Geräts an jedem Netzabschlußpunkt dar.

Falls beim Betrieb Probleme auftreten, sollten Sie sich zunächst an ihren Fachhändler wenden.

Greek

«Ο εξοπλισμός έχει εγκριθεί για πανευρωπαϊκή σύνδεση μεμονωμένου τερματικού με το δημόσιο τηλεφωνικό δίκτυο μεταγωγής (PSTN), σύμφωνα με την απόφαση 98/482/ΕΚ του Συμβουλίου. Ωστόσο, επειδή υπάρχουν διαφορές μεταξύ των επιμέρους PSTN που παρέχονται σε διάφορες χώρες, η έγκριση δεν παρέχει απ' αυτής ανεπιφύλακτη εξασφάλιση επιτυχούς λειτουργίας σε κάθε σημείο απόληξης του δικτύου PSTN.

Εάν ανακύψουν προβλήματα, θα πρέπει κατ' αρχάς να απευθύνεστε στον προμηθευτή του εξοπλισμού σας.»

Italian

„La presente apparecchiatura terminale è stata approvata in conformità della decisione 98/482/CE del Consiglio per la connessione paneuropea come terminale singolo ad una rete analogica PSTN. A causa delle differenze tra le reti dei differenti paesi, l'approvazione non garantisce però di per sé il funzionamento corretto in tutti i punti di terminazione di rete PSTN.

In caso di problemi contattare in primo luogo il fornitore del prodotto.

Portuguese

„Este equipamento foi aprovado para ligação pan-europeia de um único terminal à rede telefónica pública comutada (RTPC) nos termos da Decisão 98/482/CE. No entanto, devido às diferenças existentes entre as RTPC dos diversos países, a aprovação não garante incondicionalmente, por si só, um funcionamento correcto em todos os pontos terminais da rede da RTPC.

Em caso de problemas, deve entrar-se em contacto, em primeiro lugar, com o fornecedor do equipamento.

Spanish

•Este equipo ha sido homologado de conformidad con la Decisión 98/482/CE del Consejo para la conexión paneuropea de un terminal simple a la red telefónica pública conmutada (RTPC). No obstante, a la vista de las diferencias que existen entre las RTPC que se ofrecen en diferentes países, la homologación no constituye por sí sola una garantía incondicional de funcionamiento satisfactorio en todos los puntos de terminación de la red de una RTPC.

En caso de surgir algún problema, procede ponerse en contacto en primer lugar con el proveedor del equipo.

Swedish

"Utrustningen har godkänts i enlighet med rådets beslut 98/482/EG för alleuropeisk anslutning som enskild terminal till det allmänt tillgängliga kopplade telenätet (PSTN). På grund av de skillnader som finns mellan telenätet i olika länder utgör godkännandet emellertid inte i sig självt en absolut garanti för att utrustningen kommer att fungera tillfredsställande vid varje telenätsanslutningspunkt.

Om problem uppstår bör ni i första hand kontakta leverantören av utrustningen."

ENERGY STAR complied product



ENERGY STAR is a joint program of the U.S. Environmental Protection Agency and the U.S. Department of Energy helping us all save money and protect the environment through energy efficient products and practices.

All ASUS products with the ENERGY STAR logo comply with the ENERGY STAR standard, and the power management feature is enabled by default. The monitor and computer are automatically set to sleep after 15 and 30 minutes of user inactivity. To wake your computer, click the mouse or press any key on the keyboard. Please visit <http://www.energy.gov/powermanagement> for detail information on power management and its benefits to the environment. In addition, please visit <http://www.energystar.gov> for detail information on the ENERGY STAR joint program.

NOTE: Energy Star is not supported on FreeDOS and Linux-based operating systems.

European Union Eco-label

This ASUS Transformer Book has been awarded the EU Flower label, which means that this product has the following characteristics:

1. Decreased energy consumption during use and stand-by modes.
2. Limited use of toxic heavy metals.
3. Limited use of substances harmful to the environment and health.
4. Reduction of the use of natural resources by encouraging recycling.
5. Designed for easy upgrades and longer lifetime through providing compatible spare parts such as batteries, power supplies, the keyboard, the memory, and if available the CD drive or DVD drive.
6. Reduced solid waste through takeback policy.

For more information on the EU Flower label, please visit the European Union Eco-label website at <http://www.ecolabel.eu>.

Prevention of Hearing Loss

To prevent possible hearing damage, do not listen at high volume levels for long periods.



Coating Notice

IMPORTANT! To provide electrical insulation and maintain electrical safety, a coating is applied to insulate the device except on the areas where the I/O ports are located.

Global Environmental Regulation Compliance and Declaration

ASUS follows the green design concept to design and manufacture our products, and makes sure that each stage of the product life cycle of ASUS product is in line with global environmental regulations. In addition, ASUS disclose the relevant information based on regulation requirements.

Please refer to <http://csr.asus.com/english/Compliance.htm> for information disclosure based on regulation requirements ASUS is complied with:

Japan JIS-C-0950 Material Declarations

EU REACH SVHC

Korea RoHS

Swiss Energy Laws

ASUS Recycling/Takeback Services

ASUS recycling and takeback programs come from our commitment to the highest standards for protecting our environment. We believe in providing solutions for you to be able to responsibly recycle our products, batteries, other components as well as the packaging materials. Please go to <http://csr.asus.com/english/Takeback.htm> for detailed recycling information in different regions.

Regional notice for Singapore

Complies with
IDA Standards
DB103778

This ASUS product complies with IDA Standards.

Regional notice for United States of America

EC Declaration of Conformity



We, the undersigned,

Manufacturer:	ASUSTeK COMPUTER INC.
Address, City:	4F, No. 150, LI-TE Rd., PEITOU, TAIPEI 112, TAIWAN R.O.C.
Country:	TAIWAN
Authorized representative in Europe:	ASUS COMPUTER GmbH
Address, City:	HARKORT STR. 21-23, 40880 RATINGEN
Country:	GERMANY

declare the following apparatus:

Product name :	Transformer Book
Model name :	TX300CA

conform with the essential requirements of the following directives:

2004/108/EC-EMC Directive

<input checked="" type="checkbox"/> EN 55022:2010	<input checked="" type="checkbox"/> EN 55024:2010
<input checked="" type="checkbox"/> EN 61000-3-2:2006+A2:2009	<input checked="" type="checkbox"/> EN 61000-3-3:2008
<input type="checkbox"/> EN 55013:2001+A1:2003+A2:2006	<input type="checkbox"/> EN 55020:2007+A11:2011

1999/5/EC-R & TTE Directive

<input checked="" type="checkbox"/> EN 300 328 V1.7.1(2006-10)	<input checked="" type="checkbox"/> EN 301 489-1 V1.9.2(2011-09)
<input type="checkbox"/> EN 300 440-1 V1.6.1(2010-08)	<input type="checkbox"/> EN 301 489-3 V1.4.1(2002-08)
<input type="checkbox"/> EN 300 440-2 V1.4.1(2010-08)	<input type="checkbox"/> EN 301 489-4 V1.4.1(2009-05)
<input type="checkbox"/> EN 301 511 V9.0.2(2003-03)	<input type="checkbox"/> EN 301 489-7 V1.3.1(2005-11)
<input type="checkbox"/> EN 301 908-1 V5.2.1(2011-05)	<input type="checkbox"/> EN 301 489-9 V1.4.1(2007-11)
<input type="checkbox"/> EN 301 908-2 V5.2.1(2011-07)	<input checked="" type="checkbox"/> EN 301 489-17 V2.1.1(2009-05)
<input type="checkbox"/> EN 301 893 V1.6.1(2011-11)	<input type="checkbox"/> EN 301 489-24 V1.5.1(2010-09)
<input type="checkbox"/> EN 302 544-2 V1.1.1(2009-01)	<input type="checkbox"/> EN 302 326-2 V1.2.2(2007-06)
<input type="checkbox"/> EN 302 823 V1.1.1(2009-01)	<input type="checkbox"/> EN 302 326-3 V1.3.1(2007-09)
<input type="checkbox"/> EN 300 330-1 V1.7.1(2010-02)	<input type="checkbox"/> EN 301 357-2 V1.4.1(2008-11)
<input type="checkbox"/> EN 300 330-2 V1.5.1(2010-02)	<input type="checkbox"/> EN 50385:2002
<input type="checkbox"/> EN 50360:2001	<input checked="" type="checkbox"/> EN 62311:2008
<input type="checkbox"/> EN 62479:2010	

2006/95/EC-LVD Directive

<input type="checkbox"/> EN 60950-1 / A11:2009	<input type="checkbox"/> EN 60065:2002 / A2:2010
<input checked="" type="checkbox"/> EN 60950-1 / A12:2011	<input type="checkbox"/> EN 60065:2002 / A12:2011

2009/125/EC-ErP Directive

<input checked="" type="checkbox"/> Regulation (EC) No. 1275/2008	<input checked="" type="checkbox"/> Regulation (EC) No. 278/2009
<input type="checkbox"/> Regulation (EC) No. 642/2009	

2011/65/EU-RoHS Directive

Ver. 121001

CE marking



(EC conformity marking)

Position : CEO

Name : Jerry Shen

Declaration Date: Nov. 18, 2012

Year to begin affixing CE marking:2012

Signature : _____